



TEXAS FARM BUREAU™

Apple

ACTIVITY BOOK



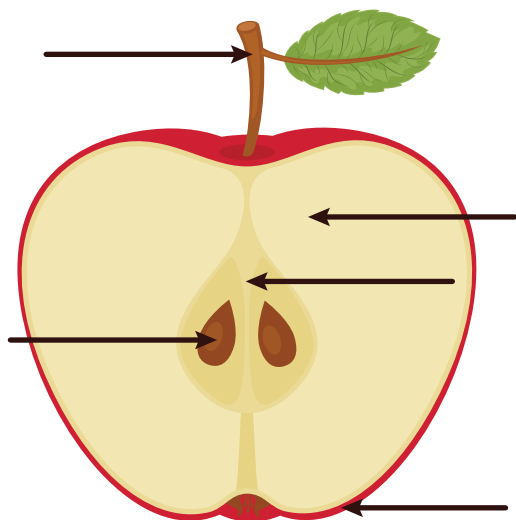
This book belongs to:

All About Apples



Apples are a fruit grown on an apple tree.

Label the parts below.



WORD BANK

SKIN

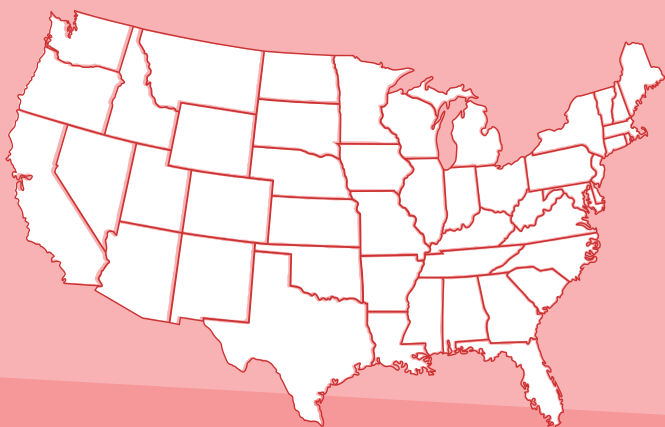
STEM

FRUIT

CORE

SEED

DID YOU KNOW?



There are 2,500 kinds of apples grown in the United States.

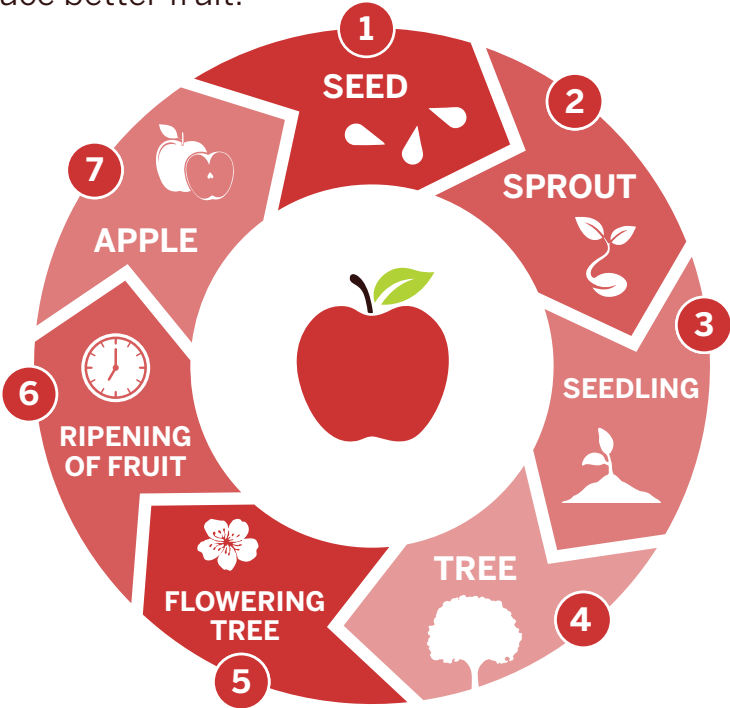
Color the top producing state.

Hint

This state borders Canada!





The Life Cycle of an Apple

Many apple trees are grafted. **Grafting** is when the trunk, leaves, branches, and fruit are connected to a root system of a different type of tree. Grafting helps the tree produce better fruit.



There are SO MANY ways to enjoy apples!

Ask your classmates their favorite and fill in the chart.

 Whole Apple	 Apple Sauce	 Apple Pie	 Apple Juice

APPLE A DAY

COLOR
ME!

It is important to eat a variety of foods to get the nutrition your body needs.

Which foods have you eaten today?



Fruit



Grain



Dairy



Vegetable



Protein

DID YOU KNOW?

Apples are a **healthy choice**. They are composed of mostly water and are high in fiber.

APPLE TRIVIA

Answer these True or False questions.

T or **F**

Apples can *only* be red.

T or **F**

Two pounds of apples are needed to make one pie.

T or **F**

Apple trees can grow to be over 40 feet tall.

(That's as tall as a 4-story building!)



Educational Outreach

P.O. Box 2689 | Waco, TX 76702-2689

edoutreach@txfb.org | 254-751-2258