



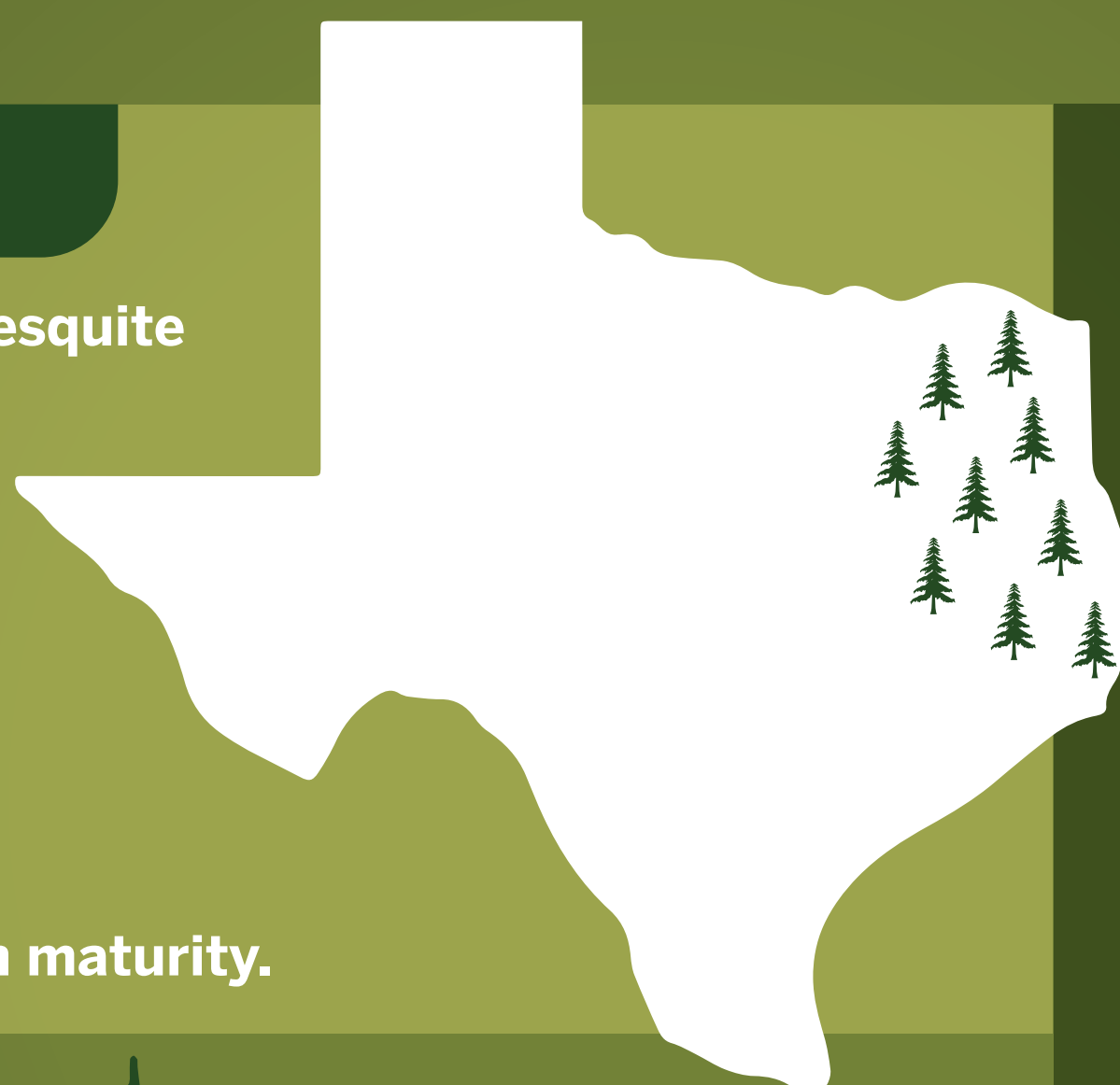
TEXAS FARM BUREAU®

Forestry

The science of developing forests by planting seedlings, managing forest health, and cultivating trees for timber and its many uses.

TEXAS FORESTRY FACTS

- Texas foresters grow pine, oak, and mesquite trees for lumber production.
- The oldest tree in Texas is a Live Oak that is estimated to be over 1,100 years old.
- East Texas is the leading region for forestry production.
- It takes 25-35 years for a tree to reach maturity.



MANAGEMENT METHODS



- **Controlled burns:** The use of fire to control underbrush growth and the spread of insect and plant disease. These burns also assist in preventing forest fires.
- **Thinning:** The selective removal of trees to improve the growth and health of the remaining trees. Thinning also lets sunlight reach the forest floor, allowing grass and small beneficial plants to grow.



10,000 SHEETS OF PAPER



151 CARDBOARD BOXES



700 PAPER BAGS

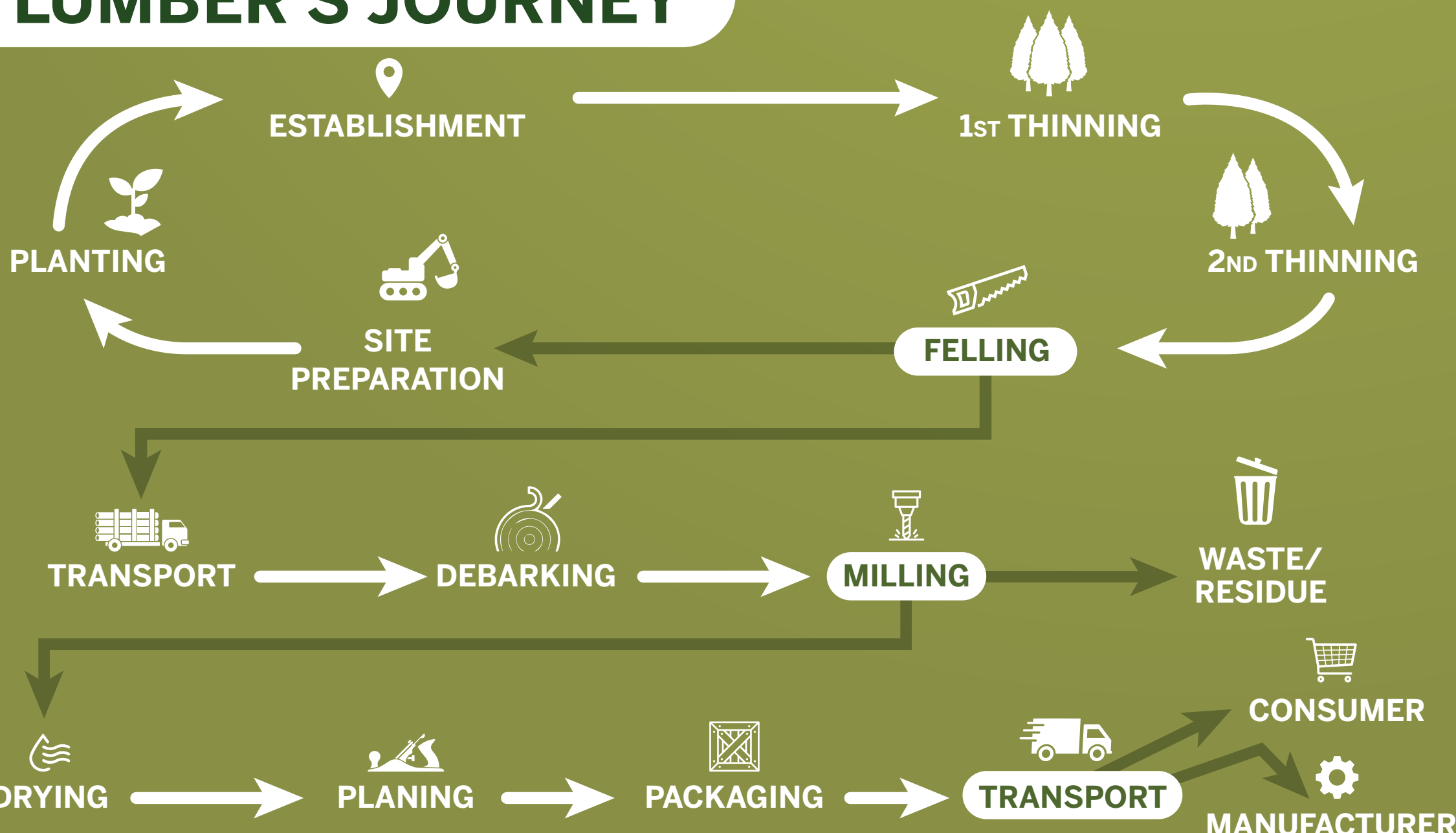


170,000 PENCILS



1,500 ROLLS OF TOILET PAPER

LUMBER'S JOURNEY



FORESTRY PRODUCTS



BUILDING MATERIALS

- Lumber
- Plywood



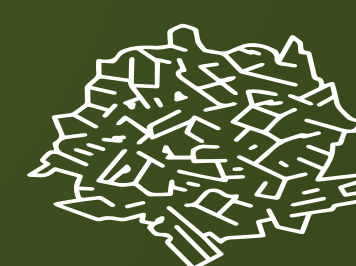
PAPER & PACKAGING

- Cardboard
- Paper
- Tissues



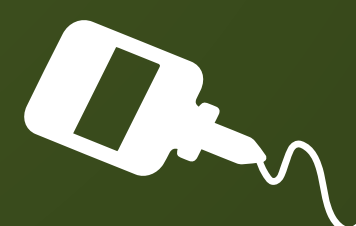
FURNITURE & FLOORING

- Shelving
- Seating
- Flooring



ENERGY MATERIALS

- Wood chips
- Pellets
- Briquettes



CHEMICALS

- Adhesives
- Dyes
- Solvents



OTHER ITEMS

- Waxes
- Mulch
- Resin

AN AGE OLD TALE

How rings are used to estimate a tree's age:

The age of a tree is determined by counting the number of dark rings that start on the inside of the bark and go to the center.

Did you know each ring represents a season of growth?

Springwood: The light part of the ring that grows quickly during the cooler months.

Summerwood: The darker part of the ring that grows slowly in the warmer months.

