



TEXAS FARM BUREAU®

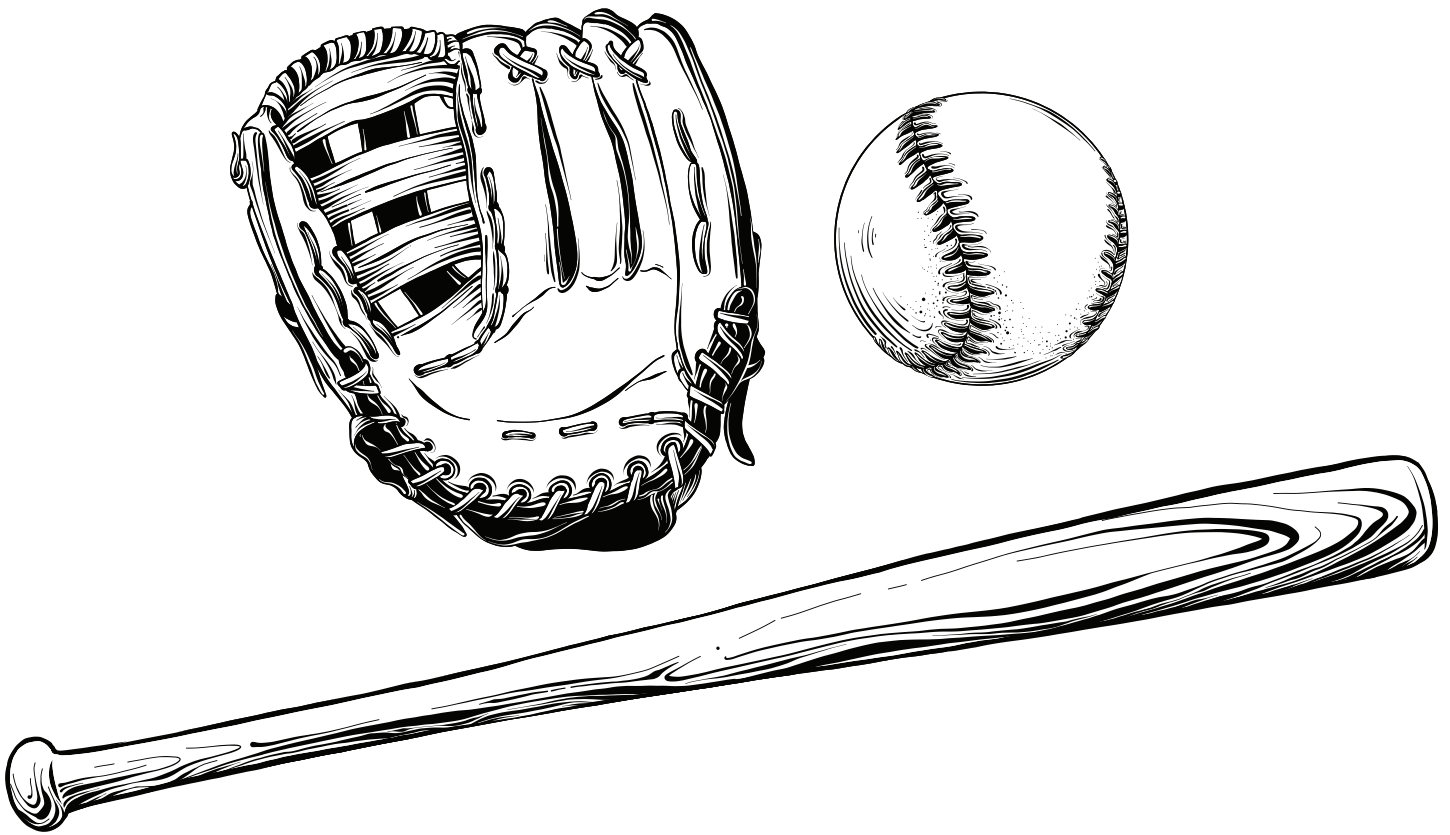


# FARM & RANCH COLORING BOOK

**Texas Edition**

This coloring book belongs to:

# BASEBALL

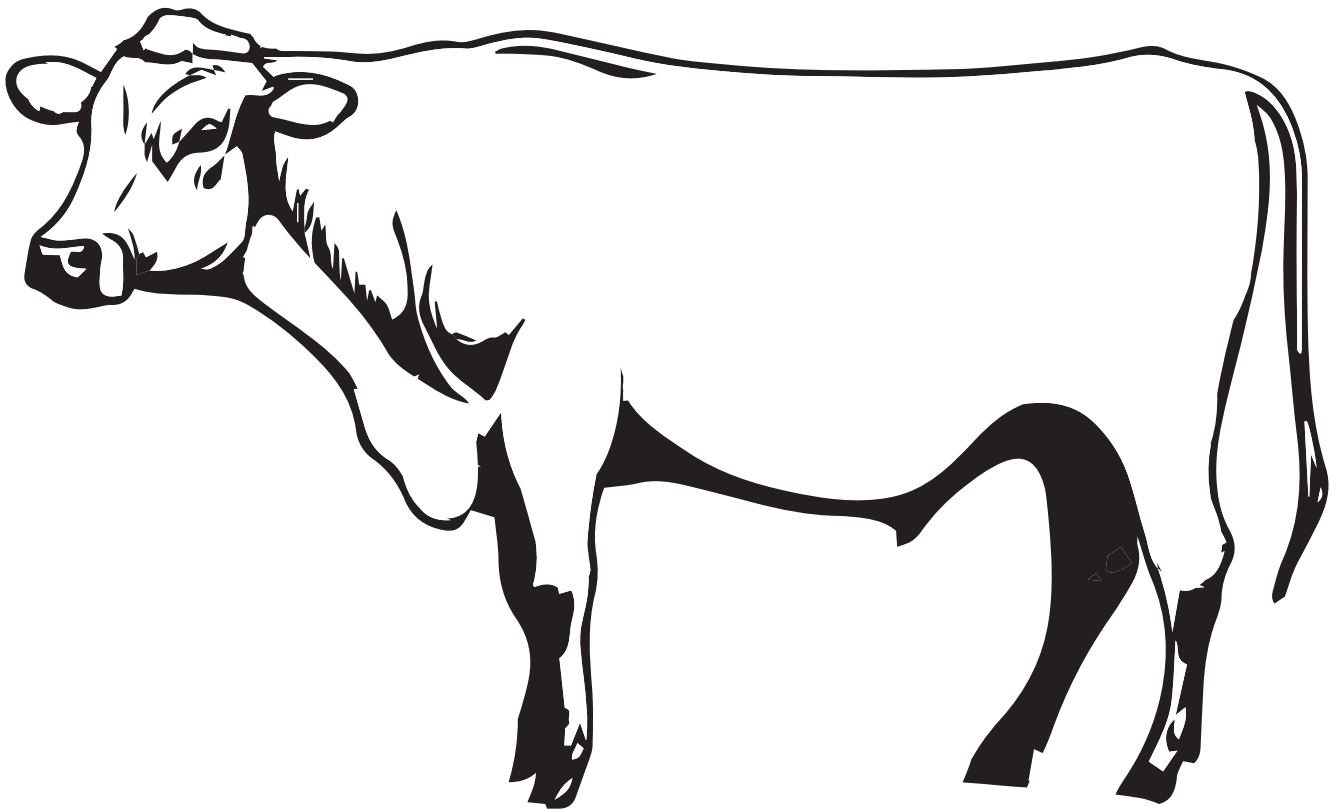


**FUN FACT:** Agriculture plays a huge role in the game of baseball. For example, a baseball glove and baseball are made of leather, and the baseball bat is made of wood from trees.

Read the word below. Then print the word.

baseball

# BEEF CATTLE

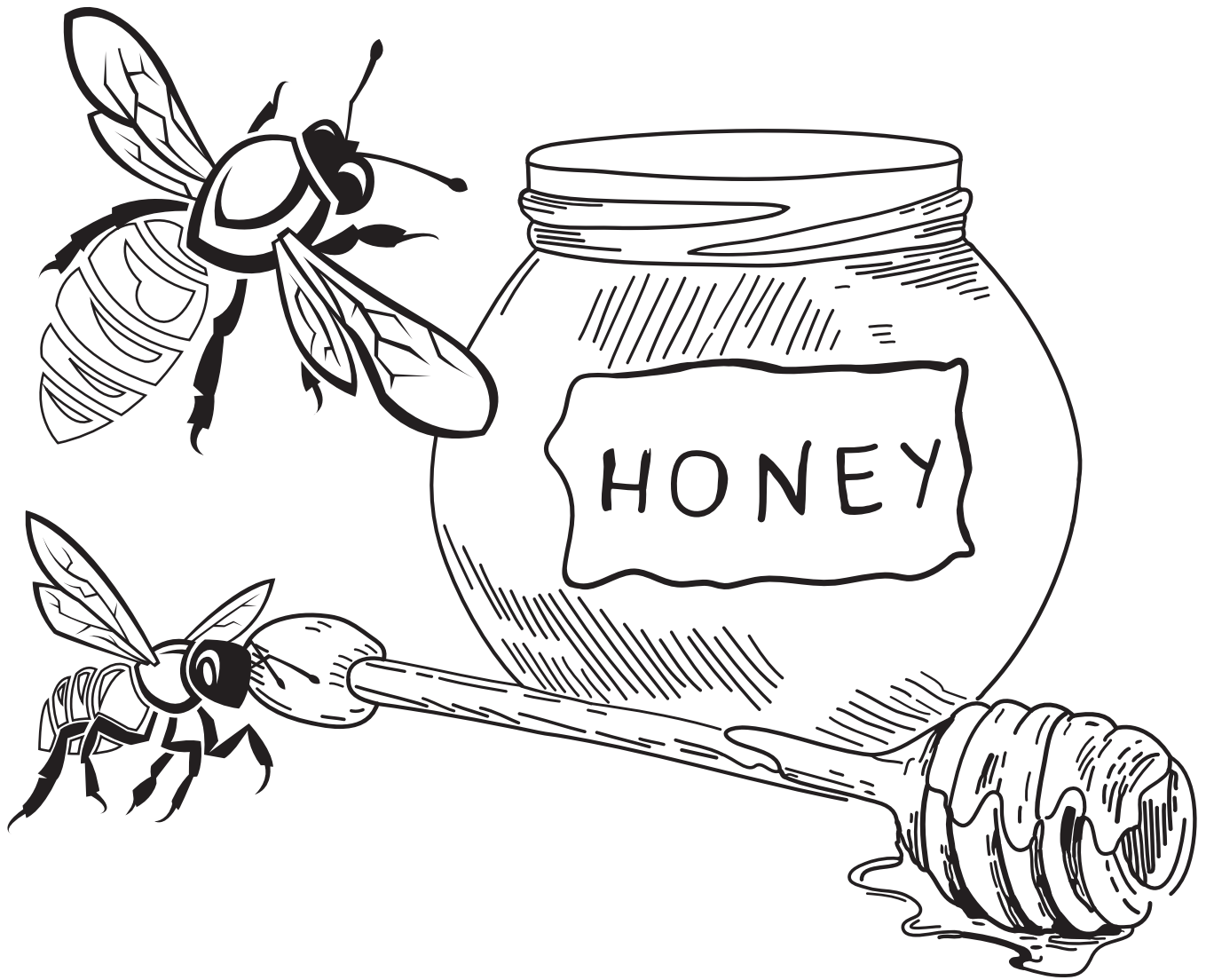


**FUN FACT:** Texas has more beef cattle than any other state.

Read the word below. Then print the word.

beef cattle

# BEEES & HONEY

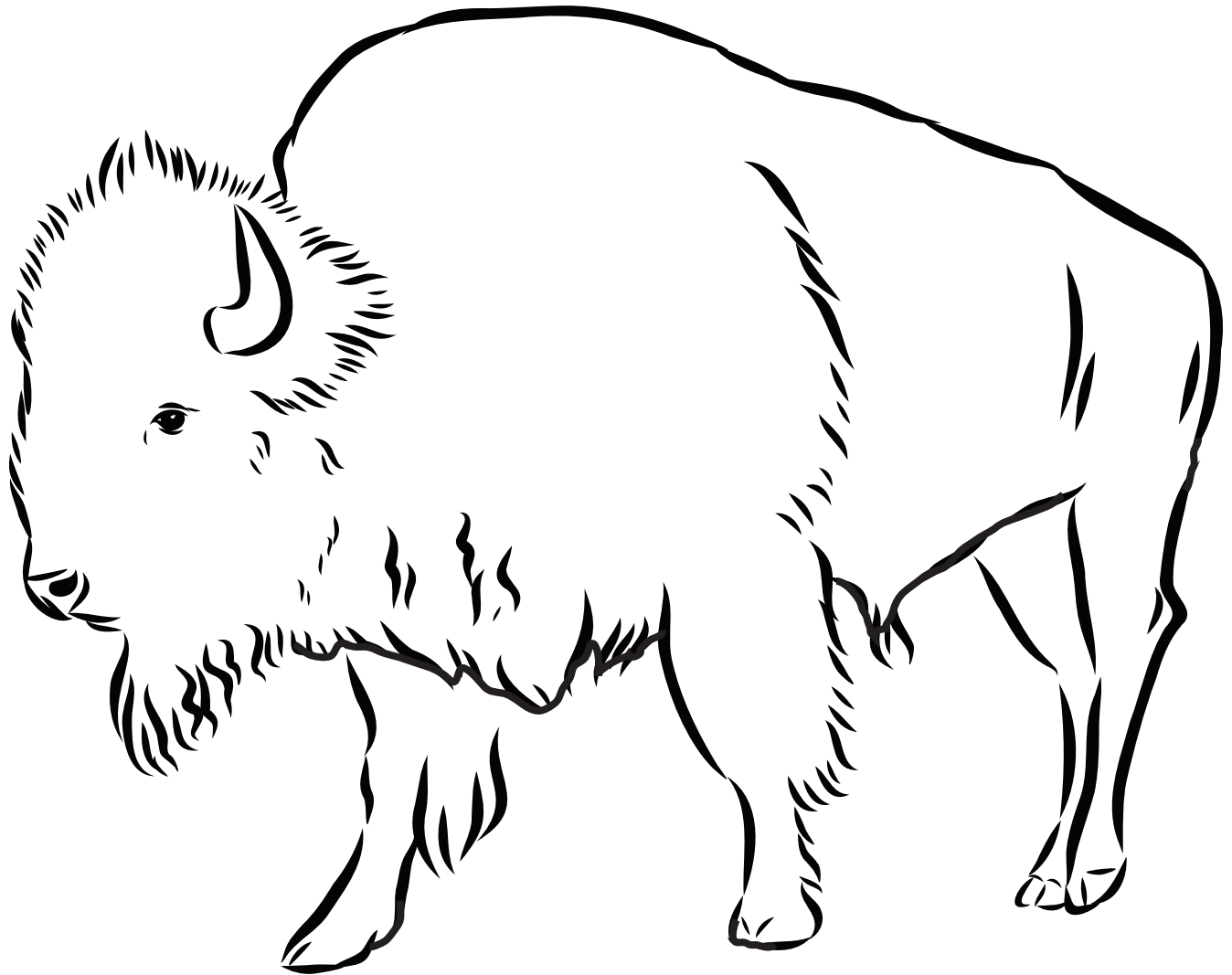


**FUN FACT:** Bees produce sweet honey and help farmers by pollinating their crops.

Read the word below. Then print the word.

bees, honey

# BISON



**FUN FACT:** The bison is the largest mammal in North America, is brown in color, and has horns.

Read the word below. Then print the word.

bison

# BLUEBONNET

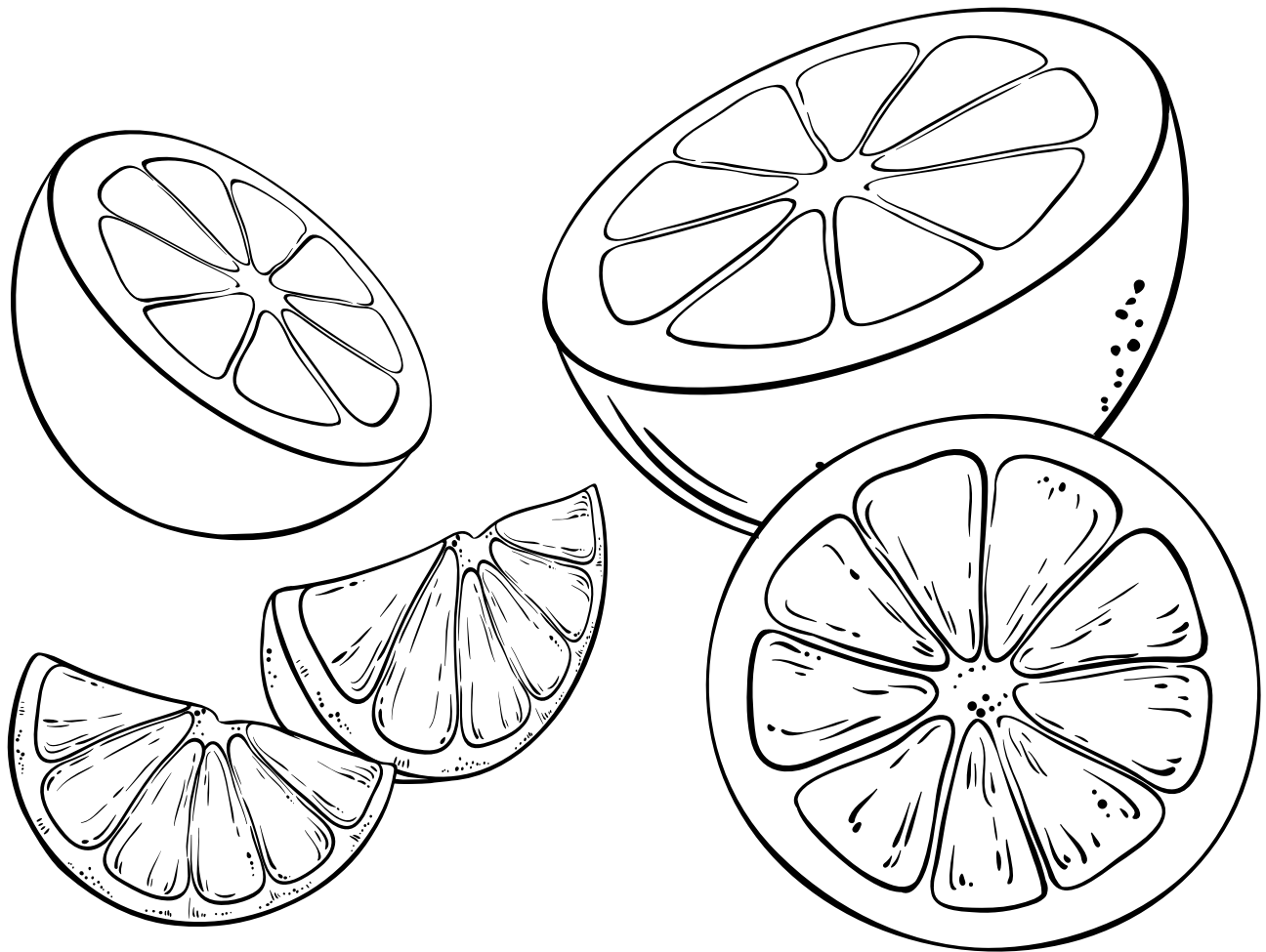


**FUN FACT:** The bluebonnet is a beautiful blue flower that blooms across parts of Texas in the spring. The bluebonnet is also the Texas state flower.

Read the word below. Then print the word.

Bluebonnet

# CITRUS

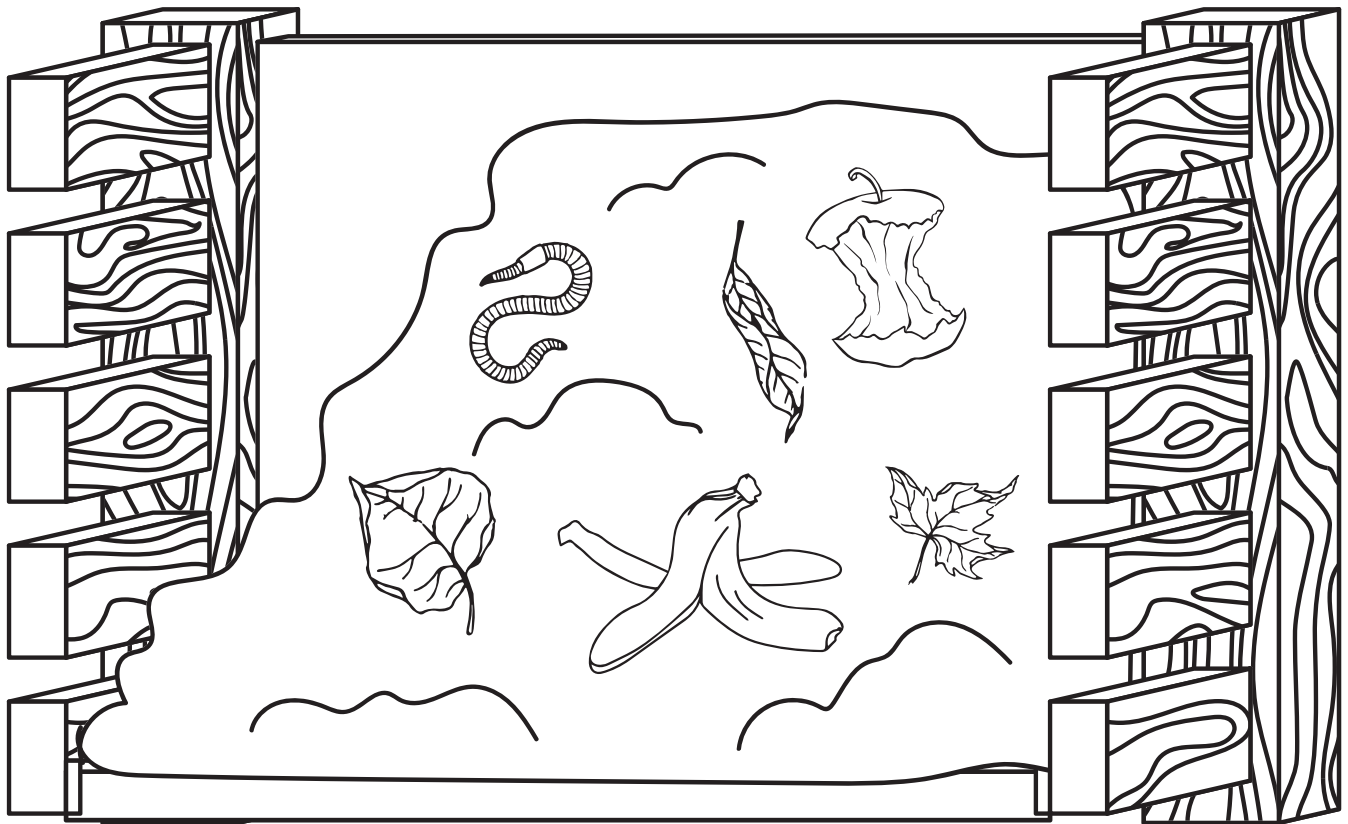


**FUN FACT:** Citrus grows on trees in the Rio Grande Valley. Oranges are a major citrus crop grown in the region. The state fruit is the Texas Red Grapefruit.

Read the word below. Then print the word.

citrus

# COMPOST



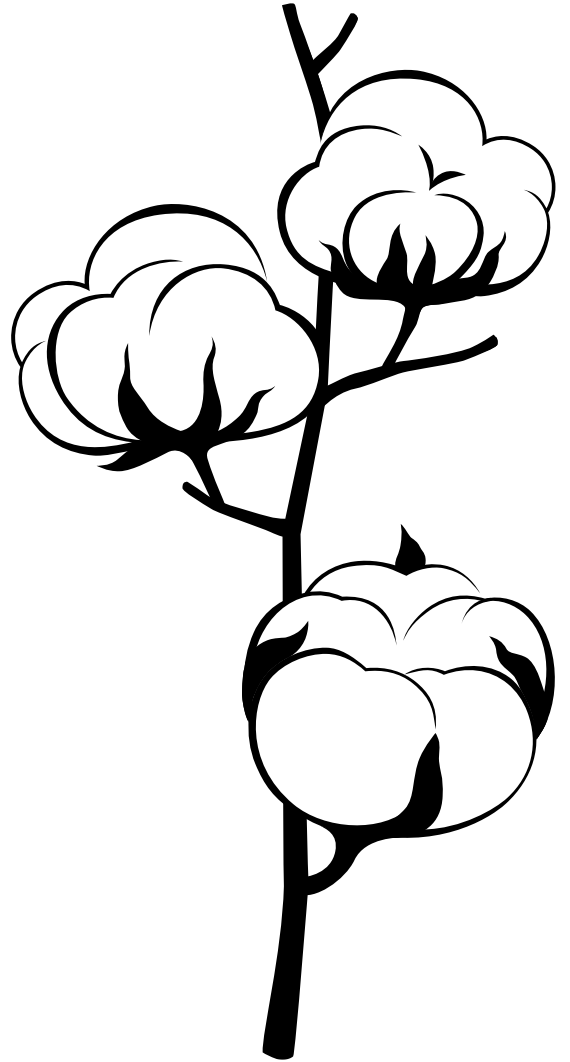
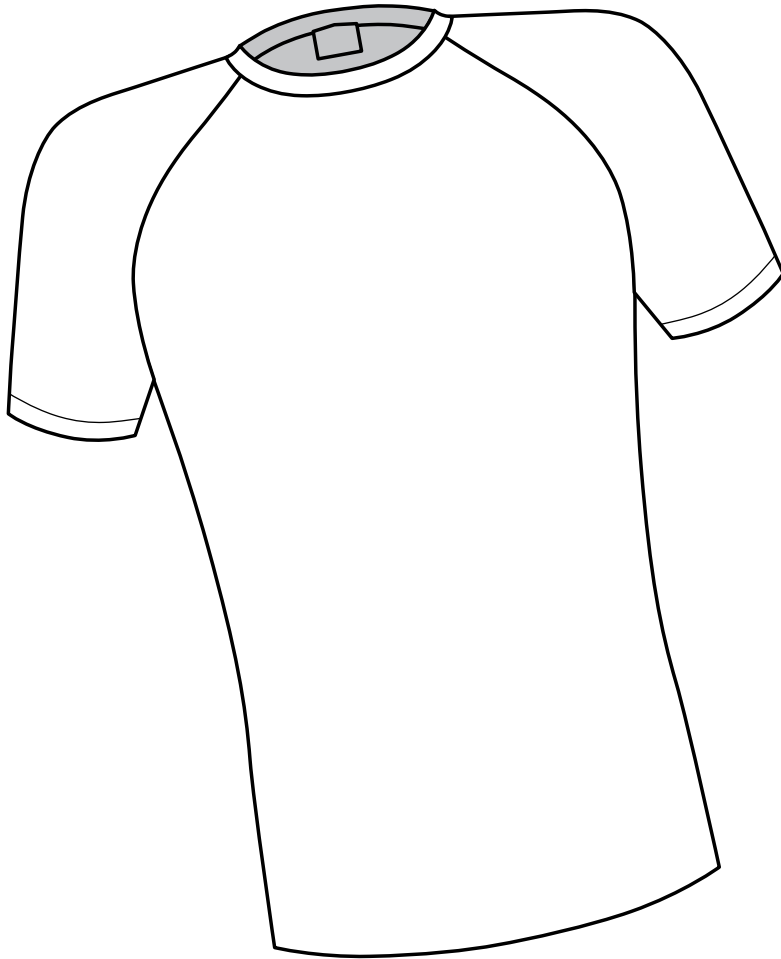
**FUN FACT:** Composting improves soil health by recycling nutrients back into the soil.

Read the word below. Then print the word.

Compost



# COTTON

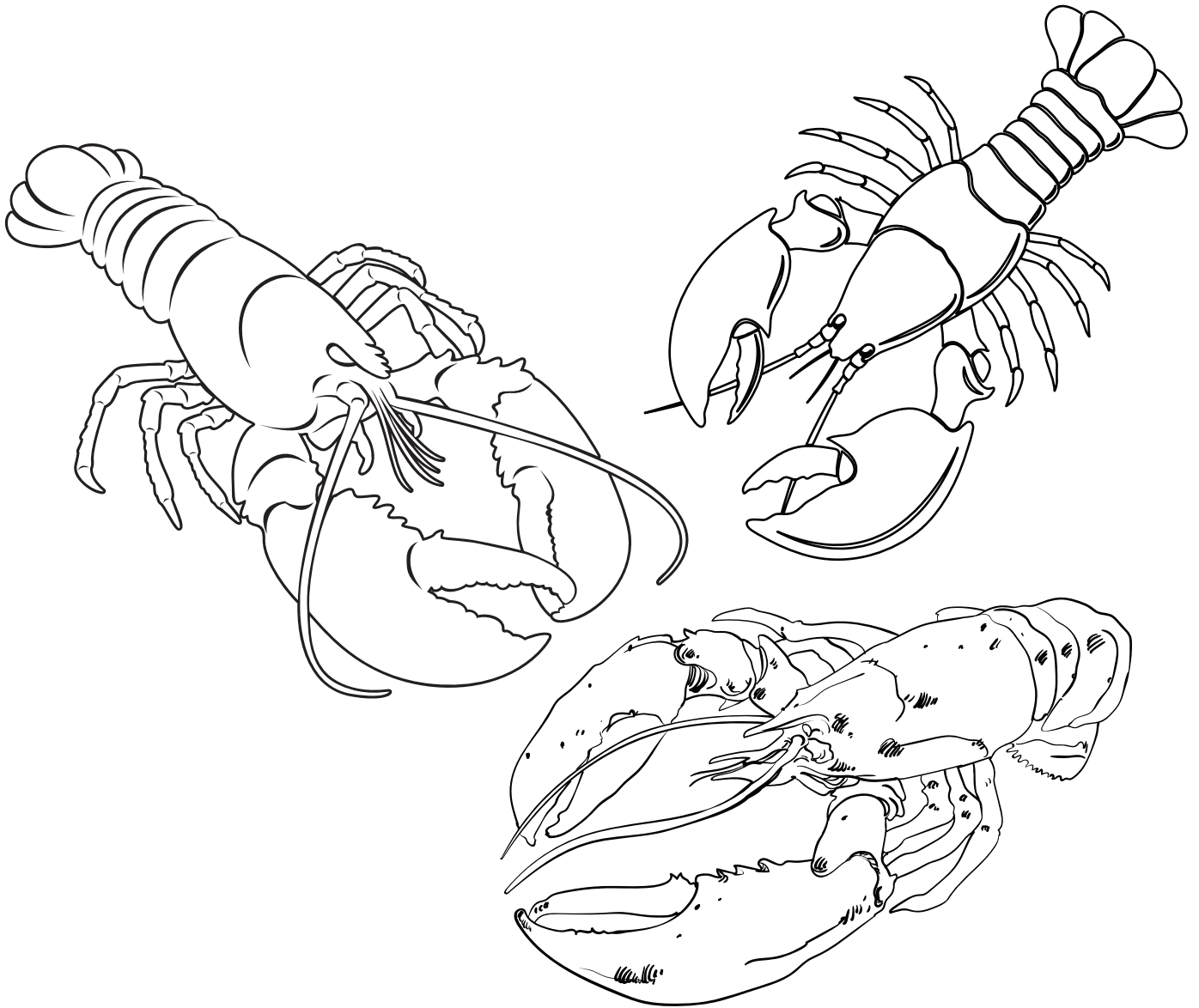


**FUN FACT:** Texas grows more cotton than anywhere else in the United States.

Read the word below. Then print the word.

cotton

# CRAWFISH



**FUN FACT:** Crawfish are not fish! They are crustaceans like shrimp, crab, and lobsters.

Read the word below. Then print the word.

Crawfish

# DAIRY COWS

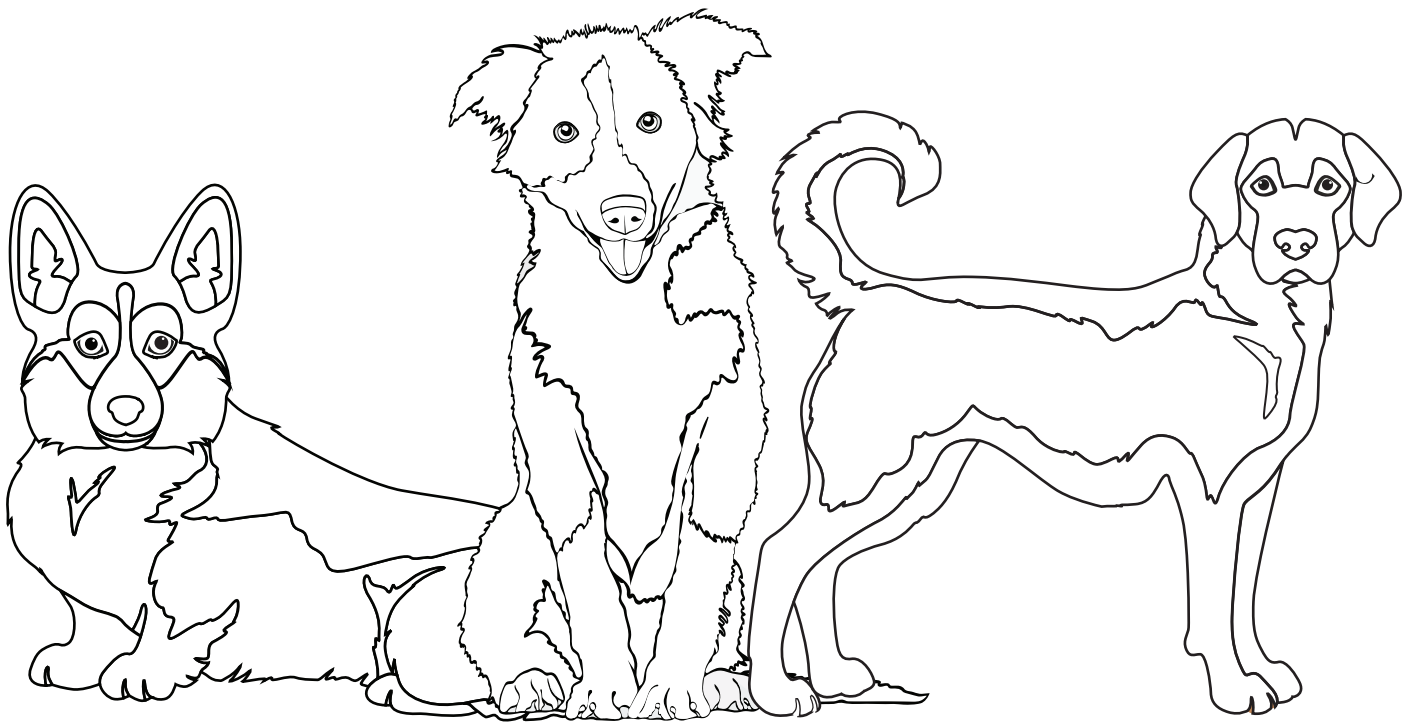


**FUN FACT:** We get many products from dairy cows like milk, butter, cheese, ice cream, and yogurt.

Read the word below. Then print the word.

dairy cows

# FARM DOGS



**FUN FACT:** Guard and herd dogs keep animals safe and together when being moved from one pasture to another. They are loyal members of the farms and ranches where they work.

Read the word below. Then print the word.

farm dog

# FARM EQUIPMENT



**FUN FACT:** The machines and attachments used to plant, care for, and harvest crops.

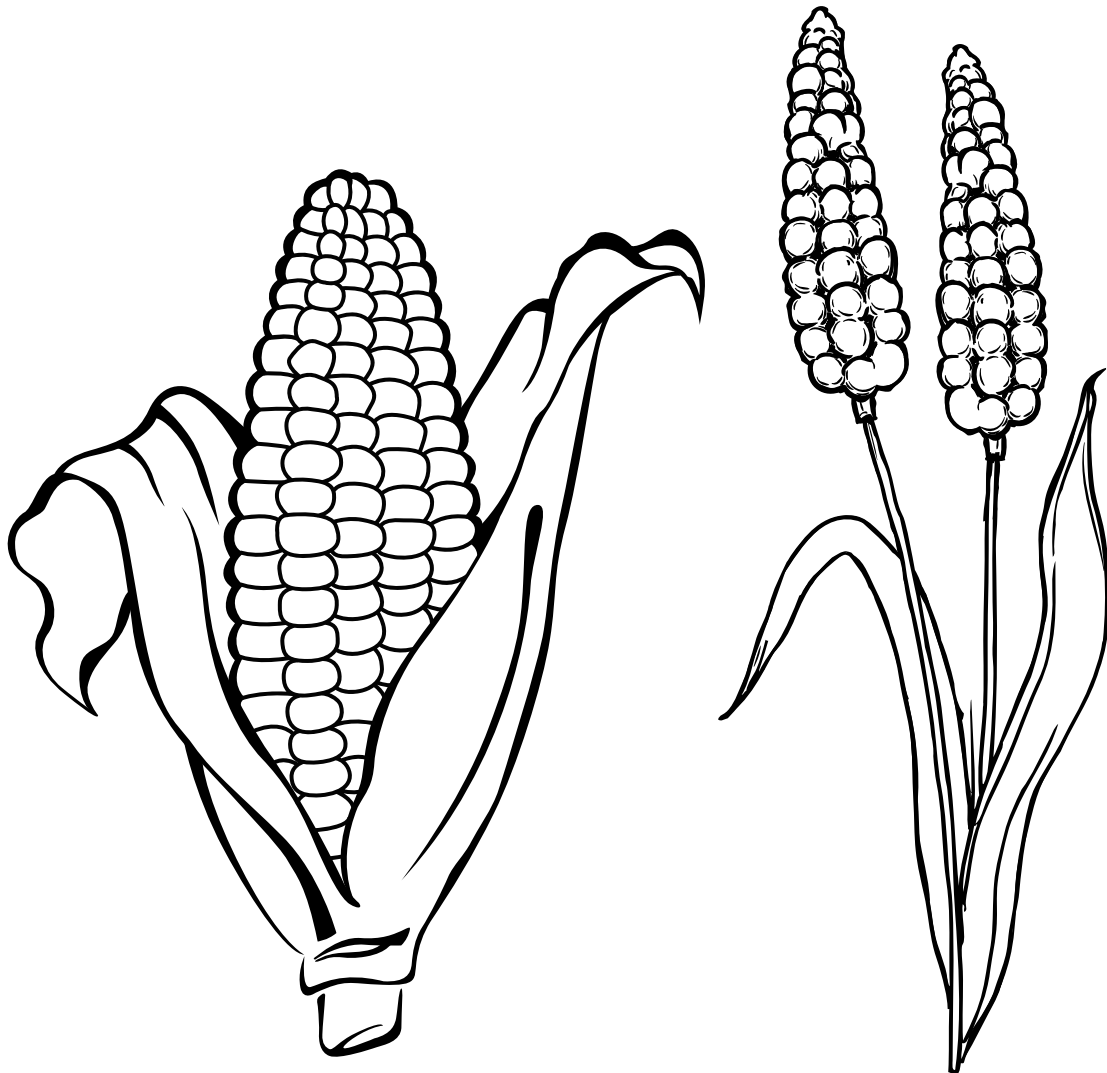
Read the word below. Then print the word.

farm

Read the word below. Then print the word.

equipment

# FEED GRAINS

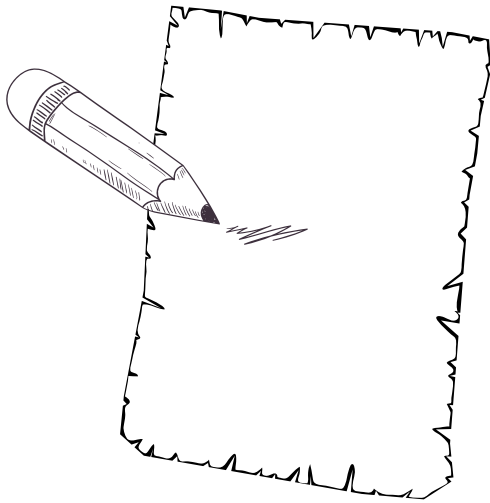
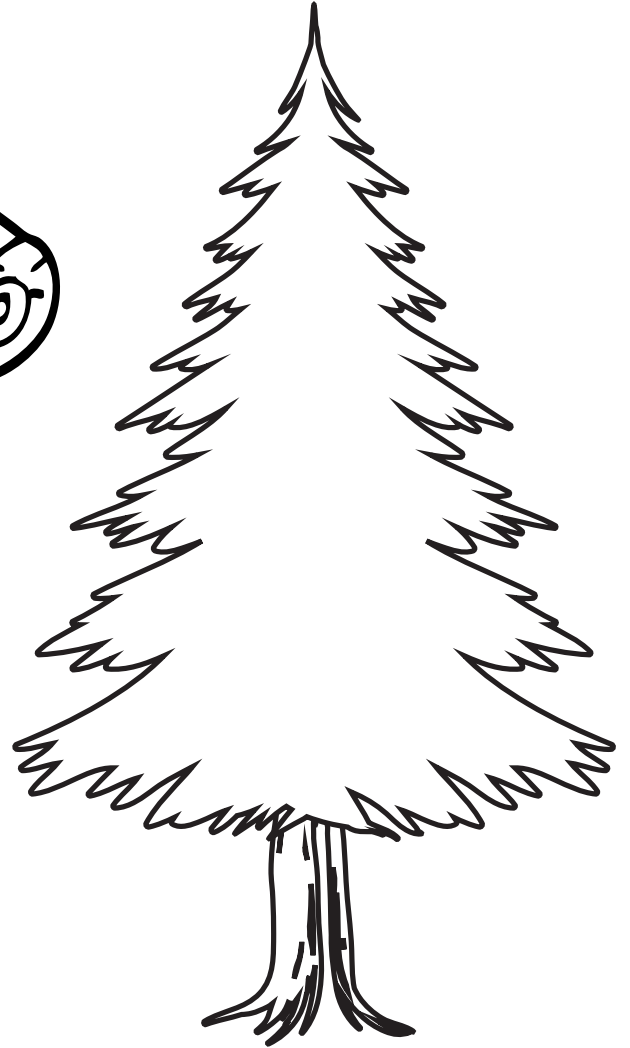
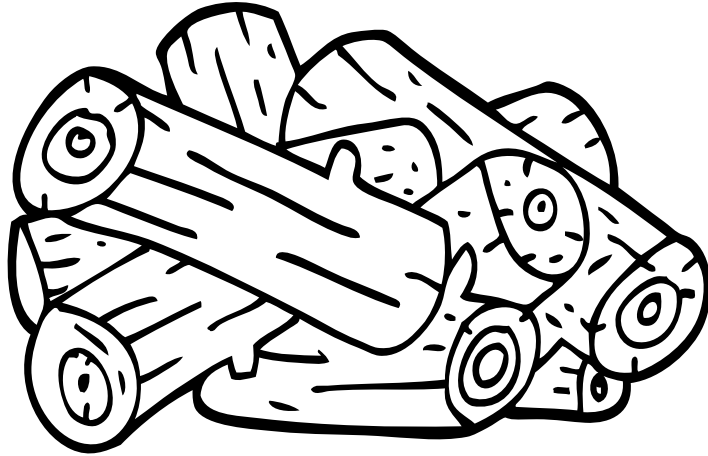


**FUN FACT:** Feed grains, like corn and grain sorghum, are grown in Texas mainly as food for livestock. People also eat varieties of corn such as sweet corn or popcorn.

Read the word below. Then print the word.

feed grains

# FORESTRY



**FUN FACT:** The wood from tall pine trees is used to build houses and make paper. Trees are a renewable resource, and foresters work hard to plant and care for the trees.

Read the word below. Then print the word.

forestry

# FRUIT & NUTS



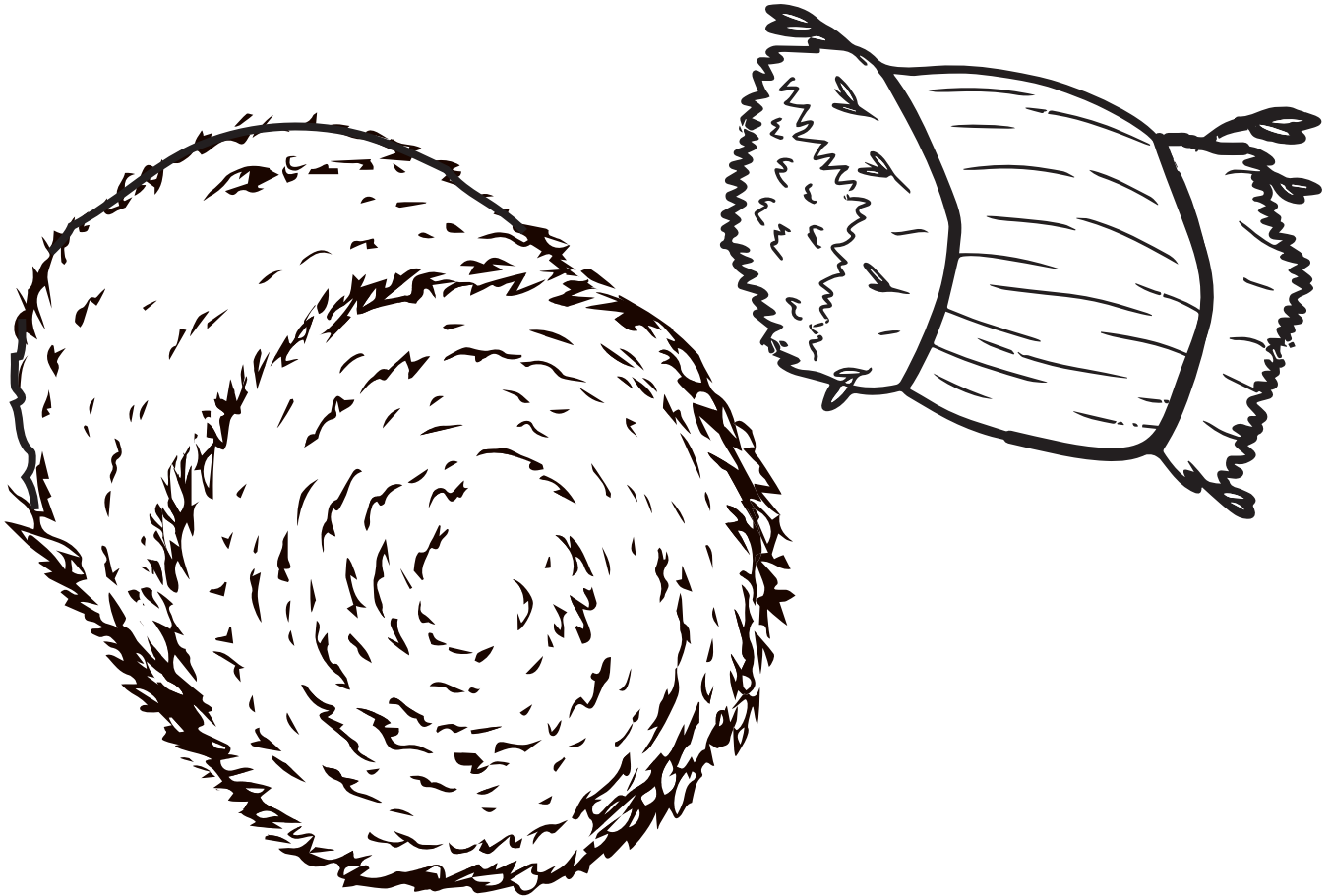
**FUN FACT:** Peaches grow on fruit trees in an orchard.  
Pecans are nuts, which also grow on trees.

Read the word below. Then print the word.

fruit, nuts



# HAY & FORAGE

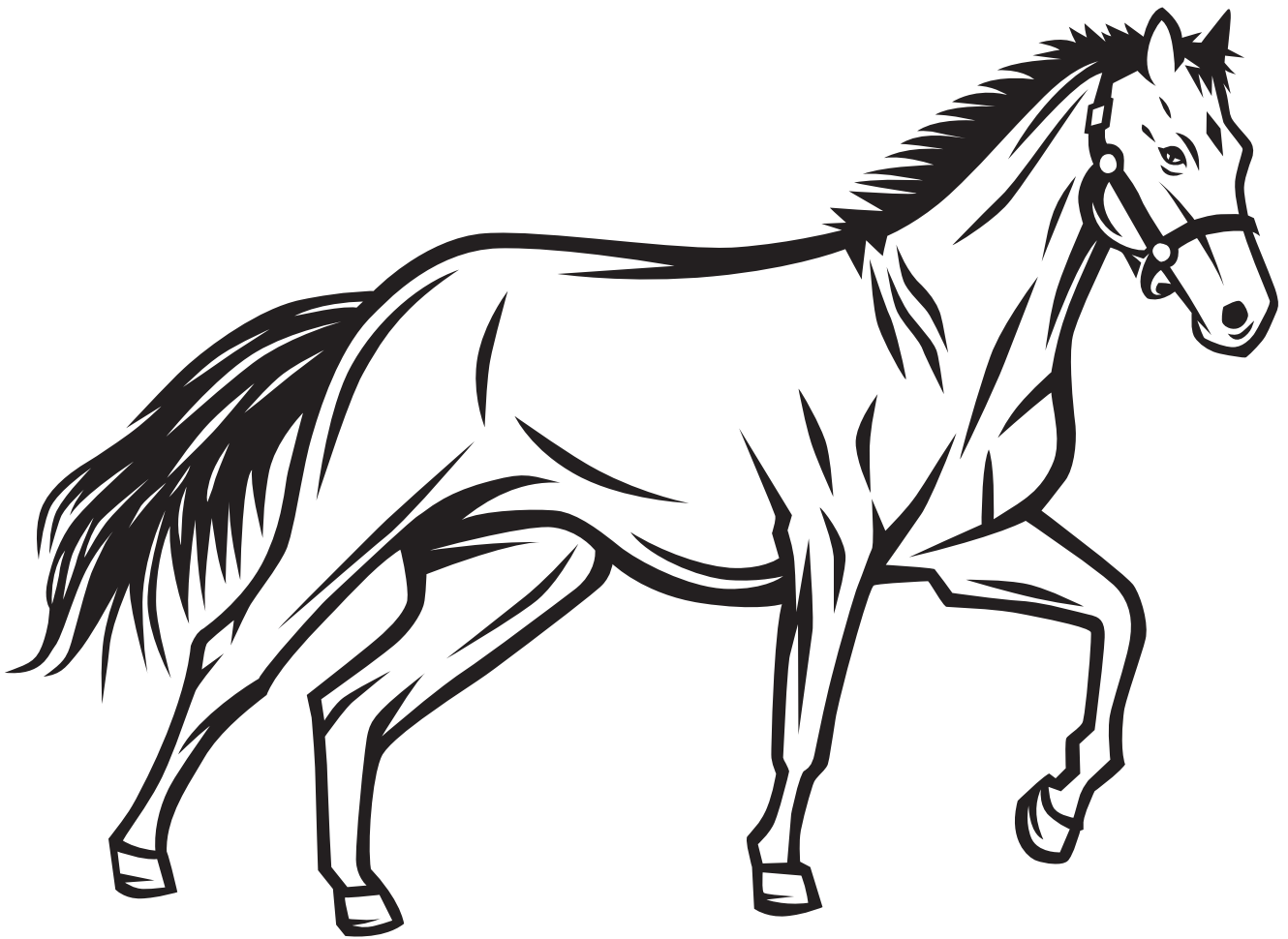


**FUN FACT:** Cattle eat a lot of hay and forage in the wintertime when there is no grass for them to eat in pastures.

Read the word below. Then print the word.

hay, forage

# HORSES

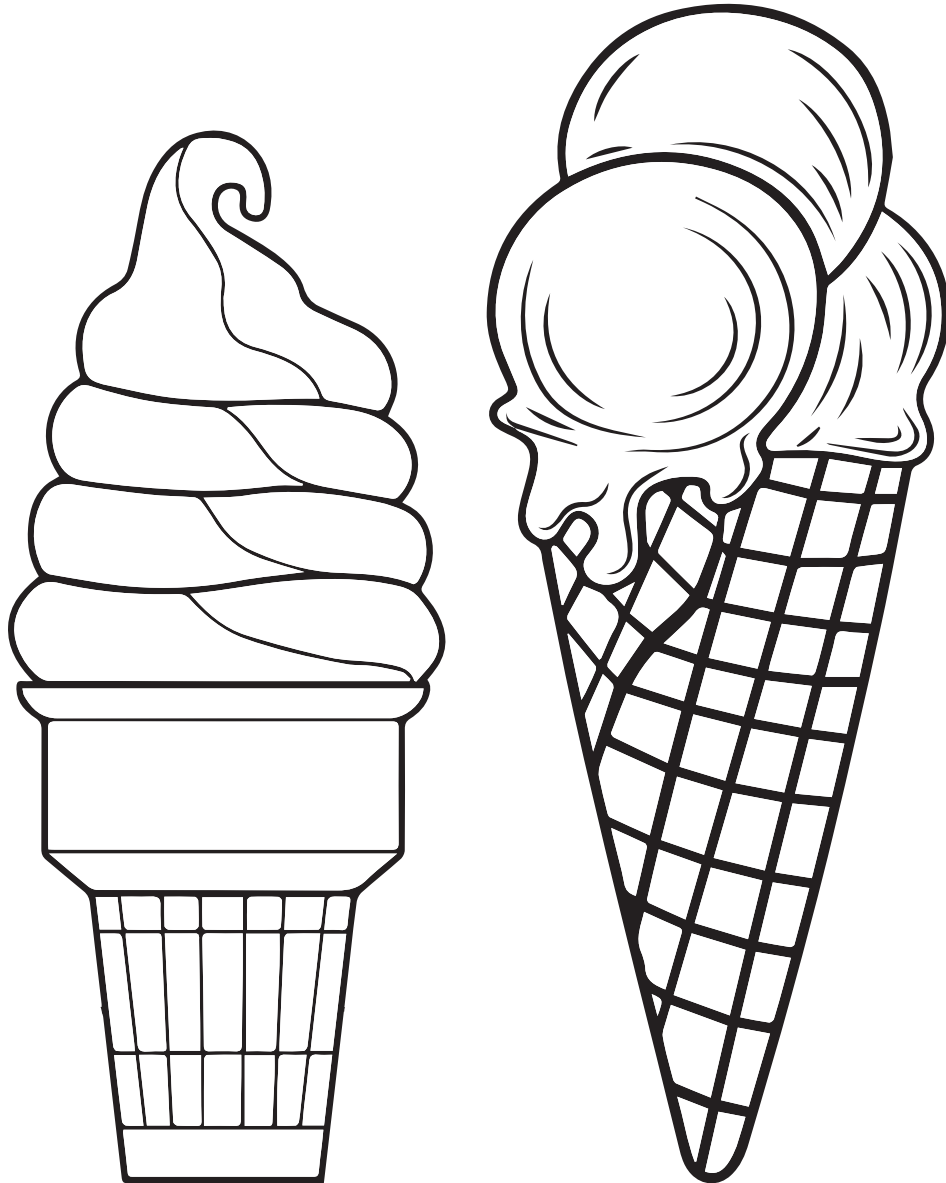


**FUN FACT:** Horses are fun to ride. They are also used to help ranchers work cattle.

Read the word below. Then print the word.

horses

# ICE CREAM

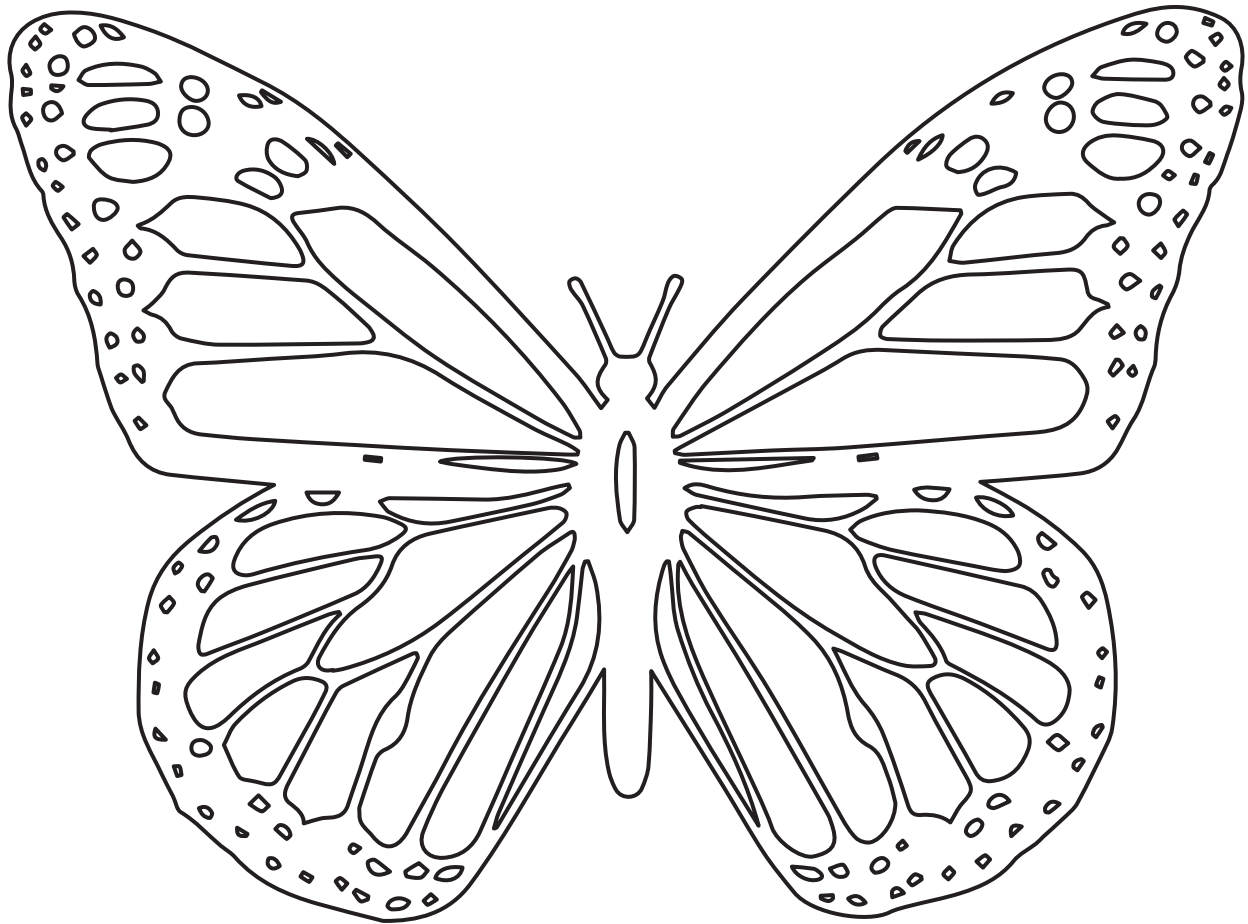


**FUN FACT:** It takes 3 gallons of milk to make 1 gallon of ice cream.

Read the word below. Then print the word.

Ice Cream

# MONARCH BUTTERFLY



**FUN FACT:** The Texas state butterfly is the Monarch butterfly. It's known for its stunning orange and black wings.

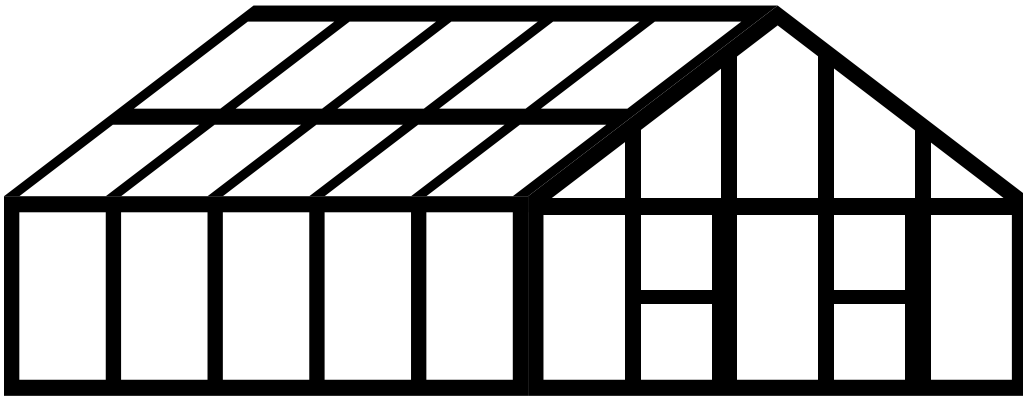
Read the word below. Then print the word.

Monarch

Read the word below. Then print the word.

butterfly

# NURSERIES

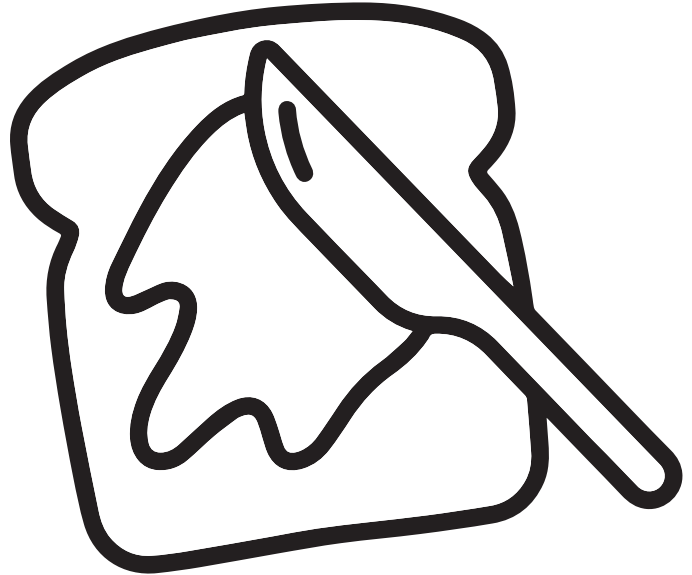


**FUN FACT:** Young trees are grown in nurseries. Greenhouses provide good temperatures for other growing plants.

Read the word below. Then print the word.

nurseries

# PEANUTS

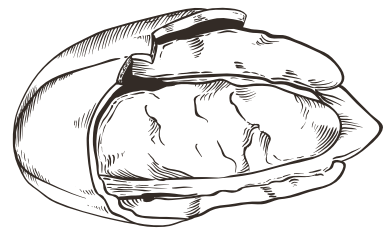
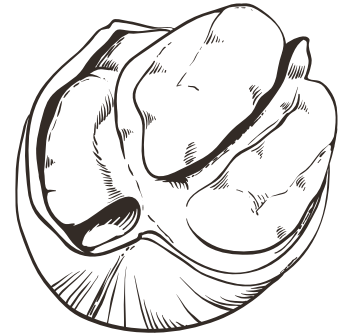
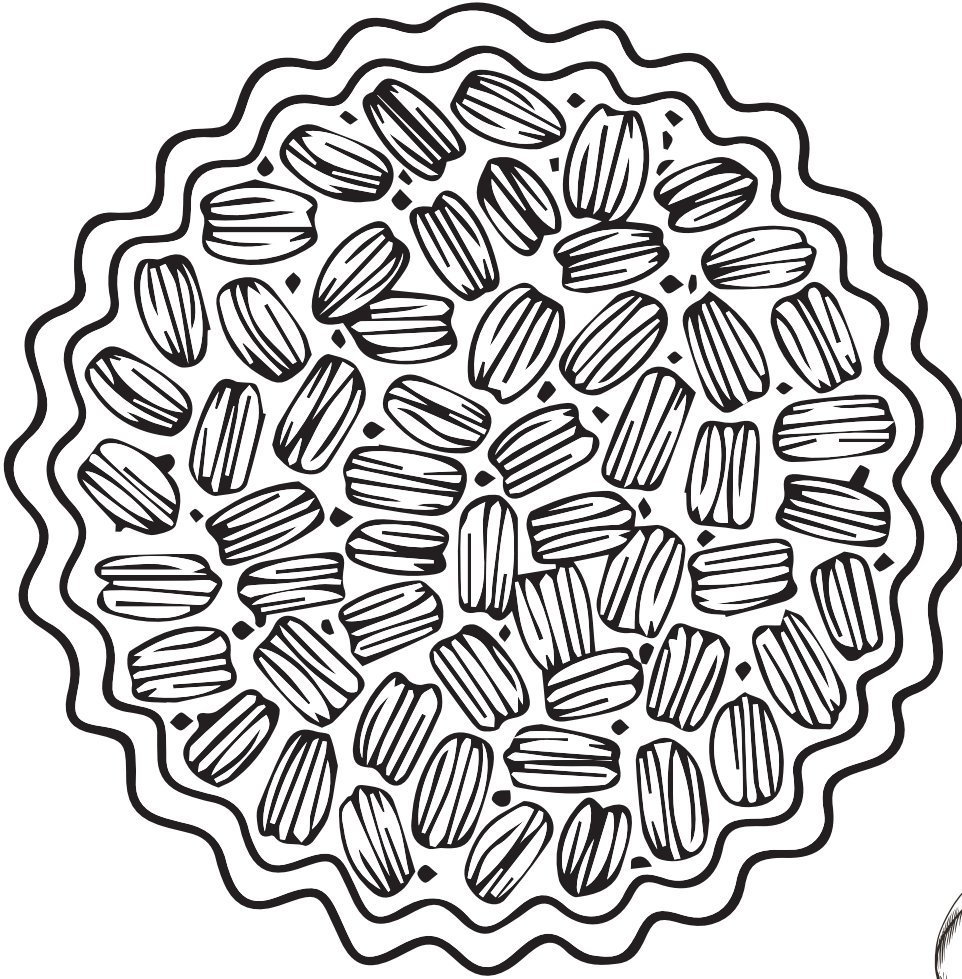


**FUN FACT:** Peanuts grow under the ground. They are used for snacks and peanut butter.

Read the word below. Then print the word.

peanuts

# PECANS

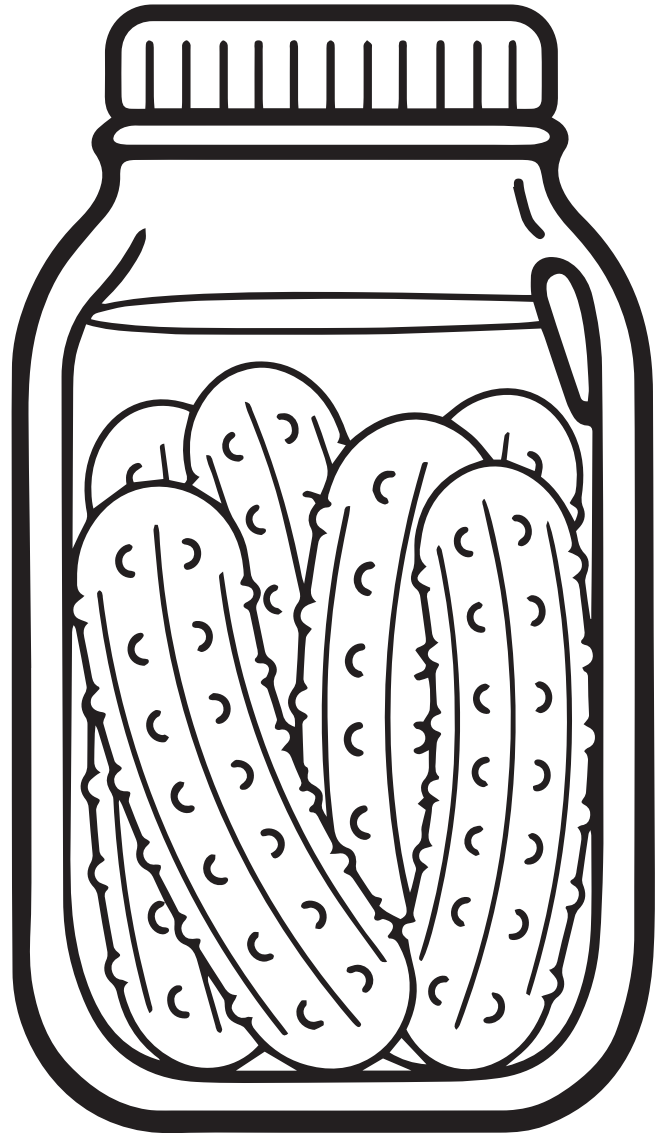
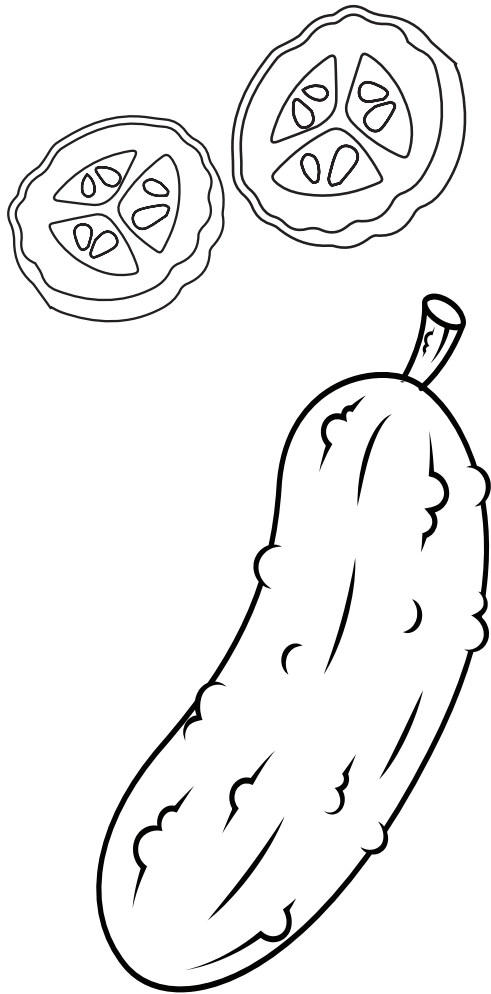


**FUN FACT:** The pecan tree is the state tree of Texas.  
Pecans are used in pies and other foods.

Read the word below. Then print the word.

pecans

# PICKLES



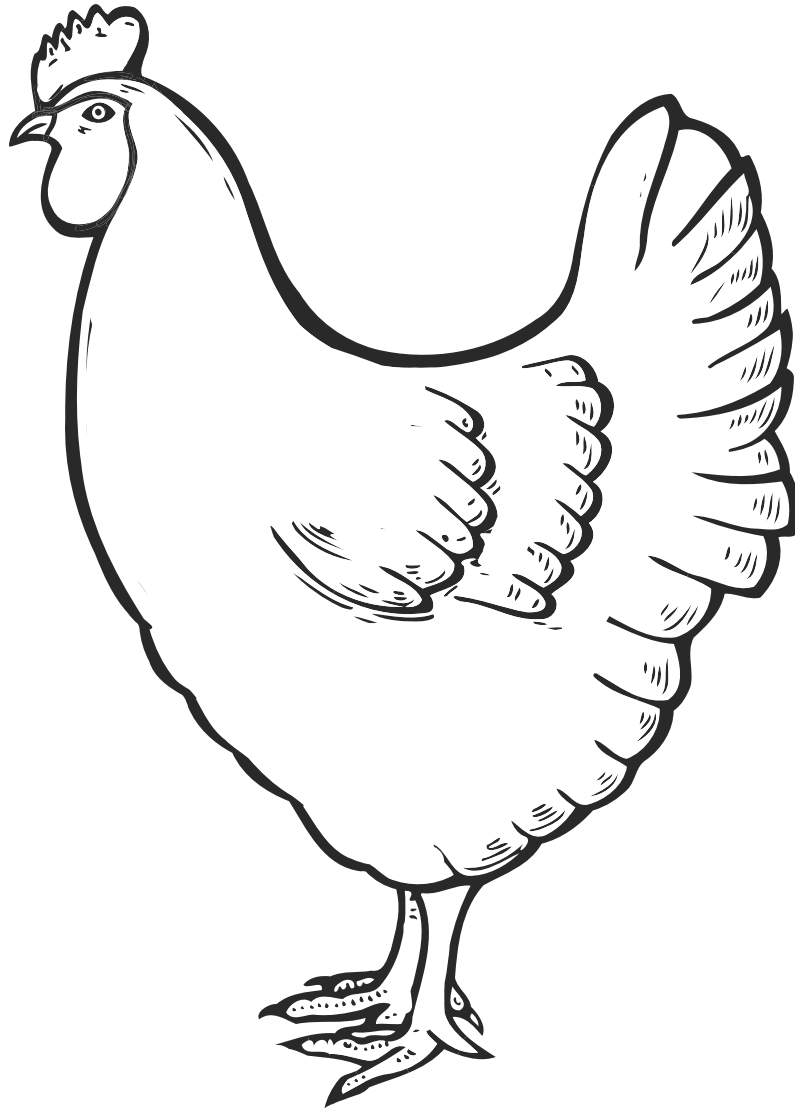
**FUN FACT:** Pickling is a way to preserve vegetables.  
A pickle is a cucumber that has been preserved in a brine.

Read the word below. Then print the word.

Pickles



# POULTRY

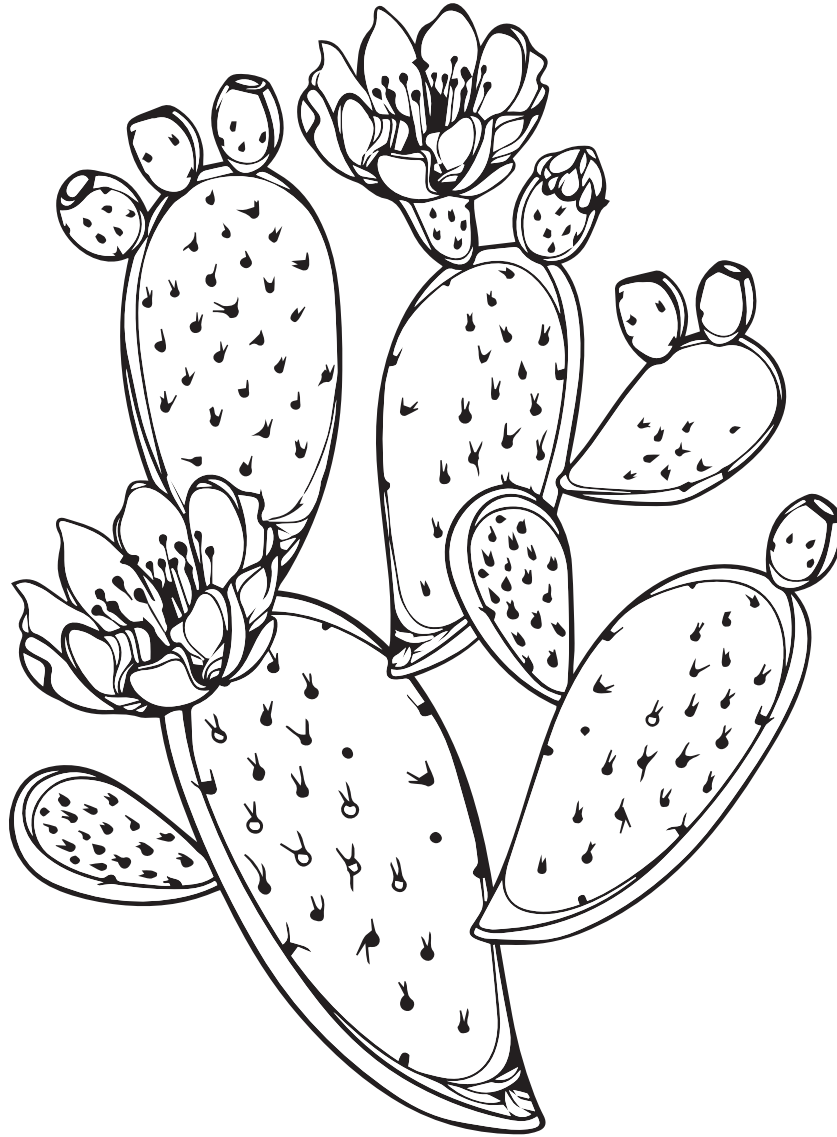


**FUN FACT:** Laying hens, broilers, and turkeys are all part of the poultry family.

Read the word below. Then print the word.

poultry

# PRICKLY PEAR



**FUN FACT:** The Texas state plant is the prickly pear cactus. It's known for its bright yellow flowers and sweet red fruit.

Read the word below. Then print the word.

Prickly pear

# QUAIL



**FUN FACT:** Bobwhite quail are the most common quail species in Texas. Quail are a wildlife species that can be found in nearly every region of Texas.

Read the word below. Then print the word.

quail

# RICE

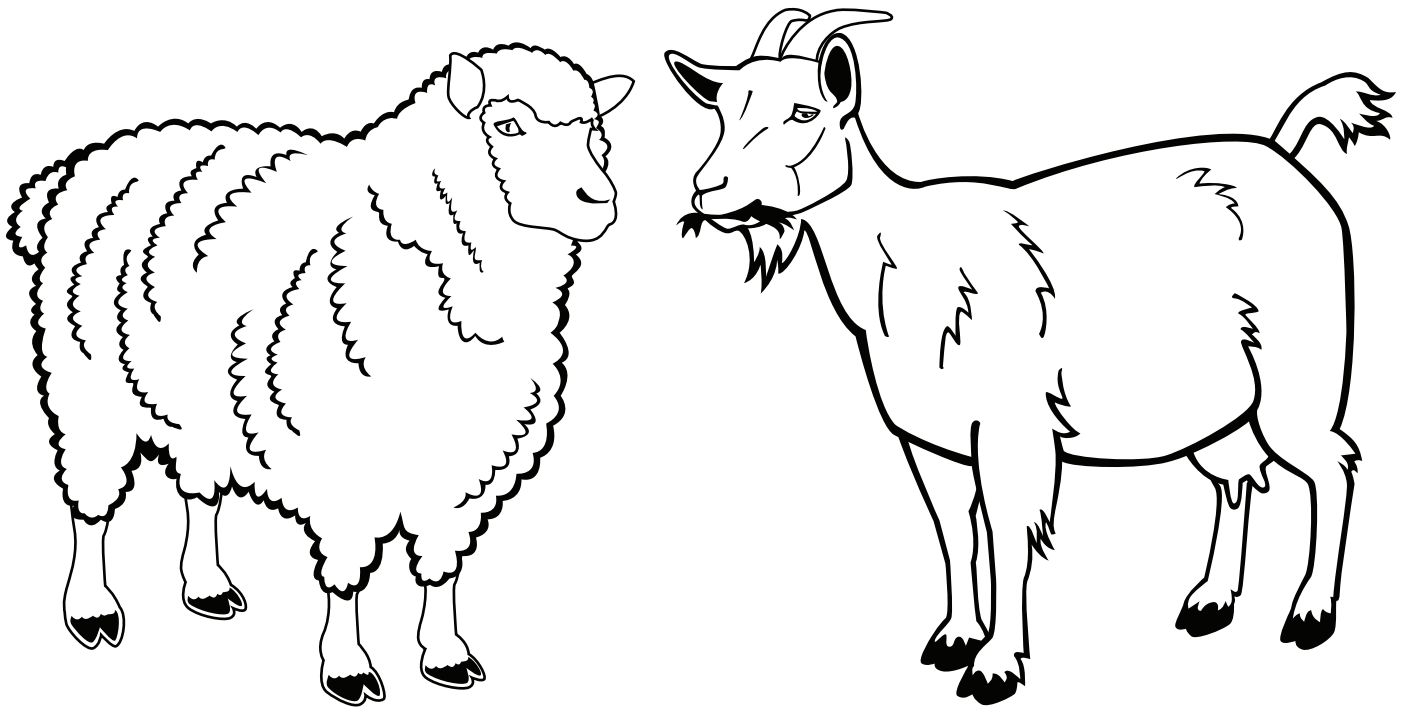


**FUN FACT:** Rice crops grow in water on the Gulf Coast of Texas.

Read the word below. Then print the word.

rice

# SHEEP & GOATS



**FUN FACT:** The wool from sheep and mohair from Angora goats are used to make many clothes that you wear. Hair sheep and some goat breeds are also raised for their meat.

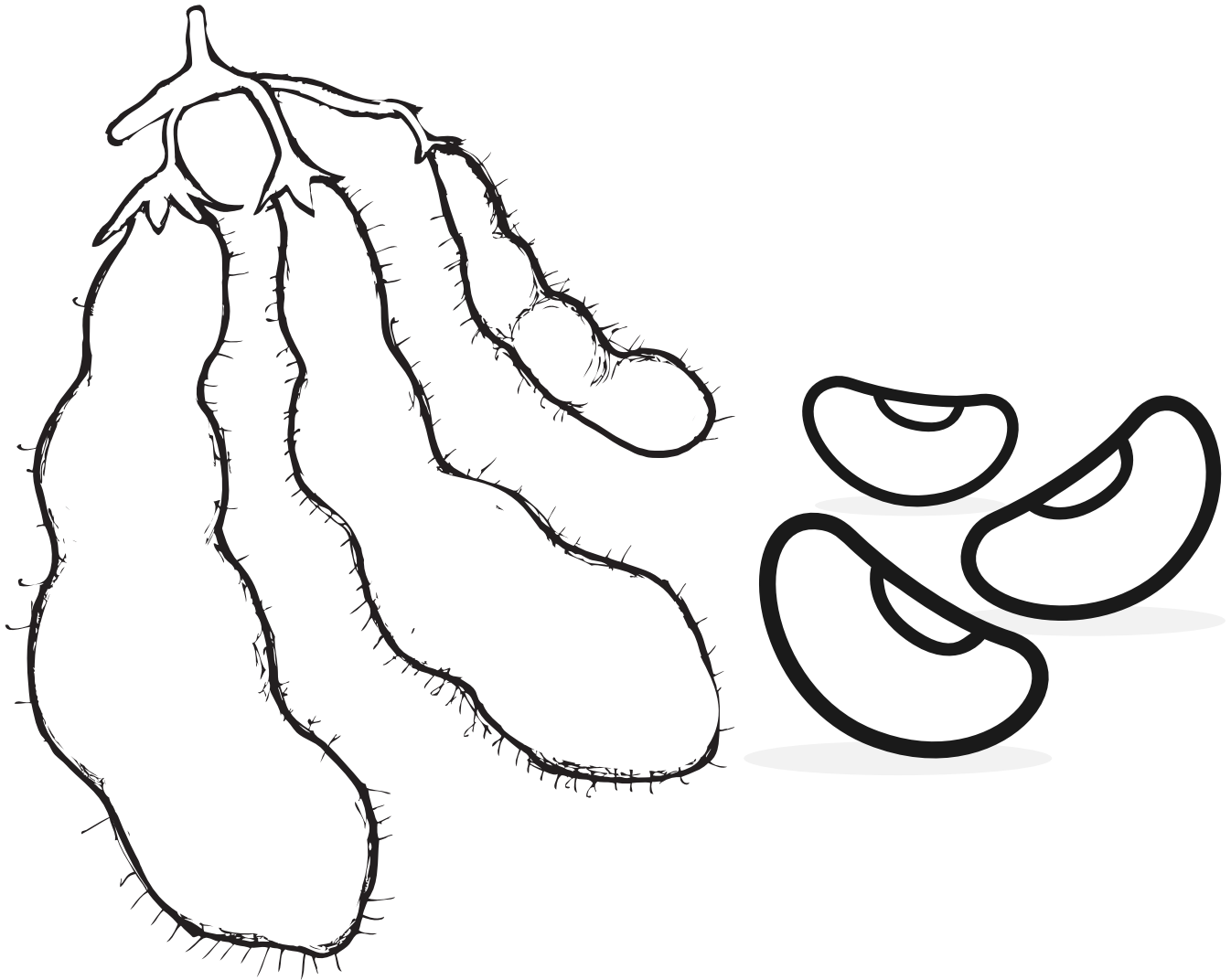
Read the word below. Then print the word.

sheep

Read the word below. Then print the word.

goats

# SOYBEANS

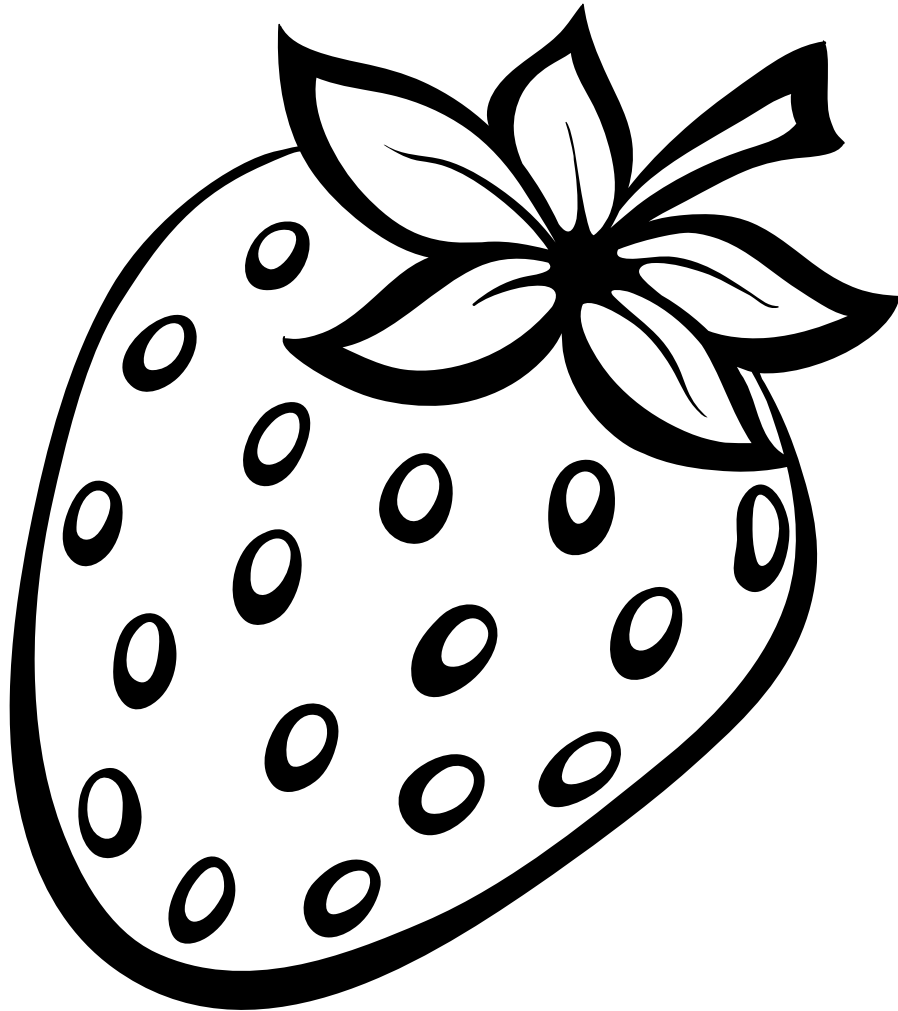


**FUN FACT:** Soybeans are used in many different foods and other products.

Read the word below. Then print the word.

soybeans

# STRAWBERRY

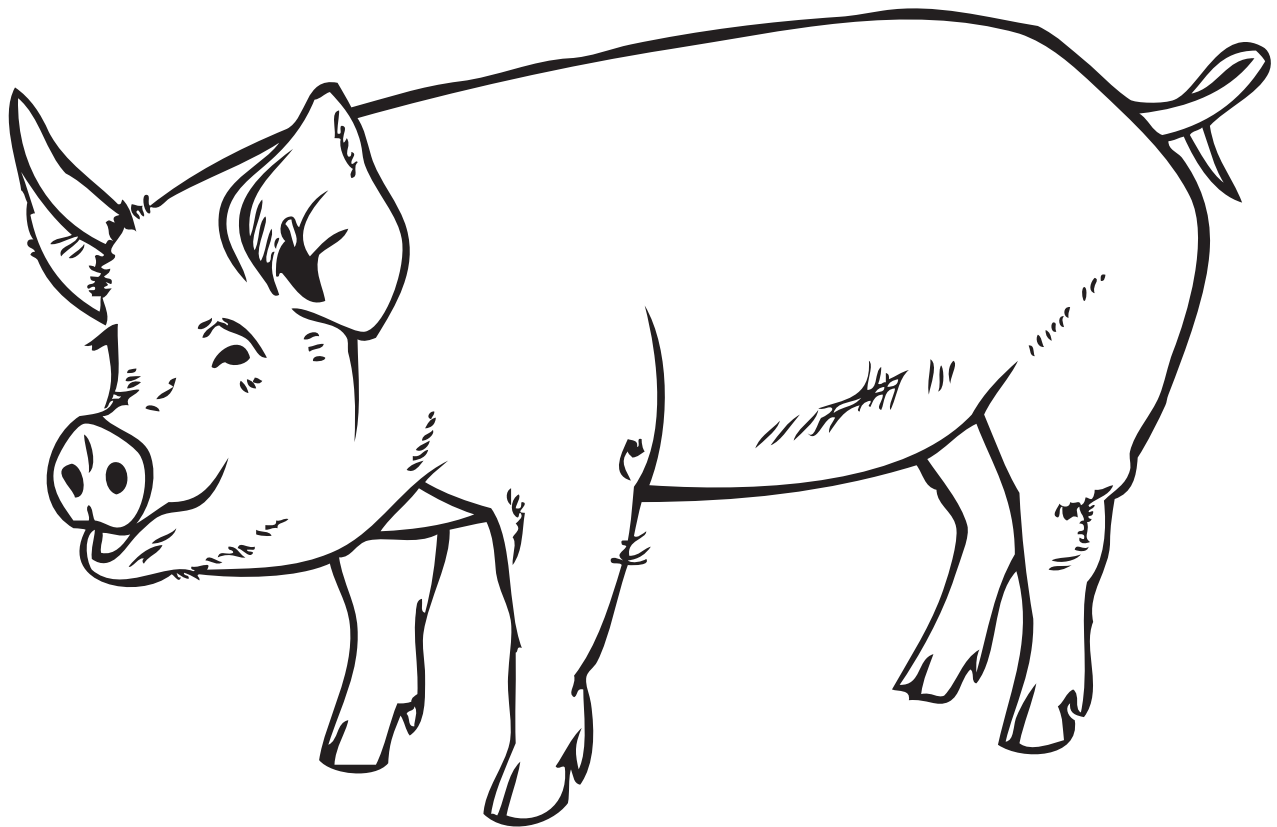


**FUN FACT:** Strawberries are a sweet, red fruit that are harvested during the spring months.

Read the word below. Then print the word.

strawberry

# SWINE



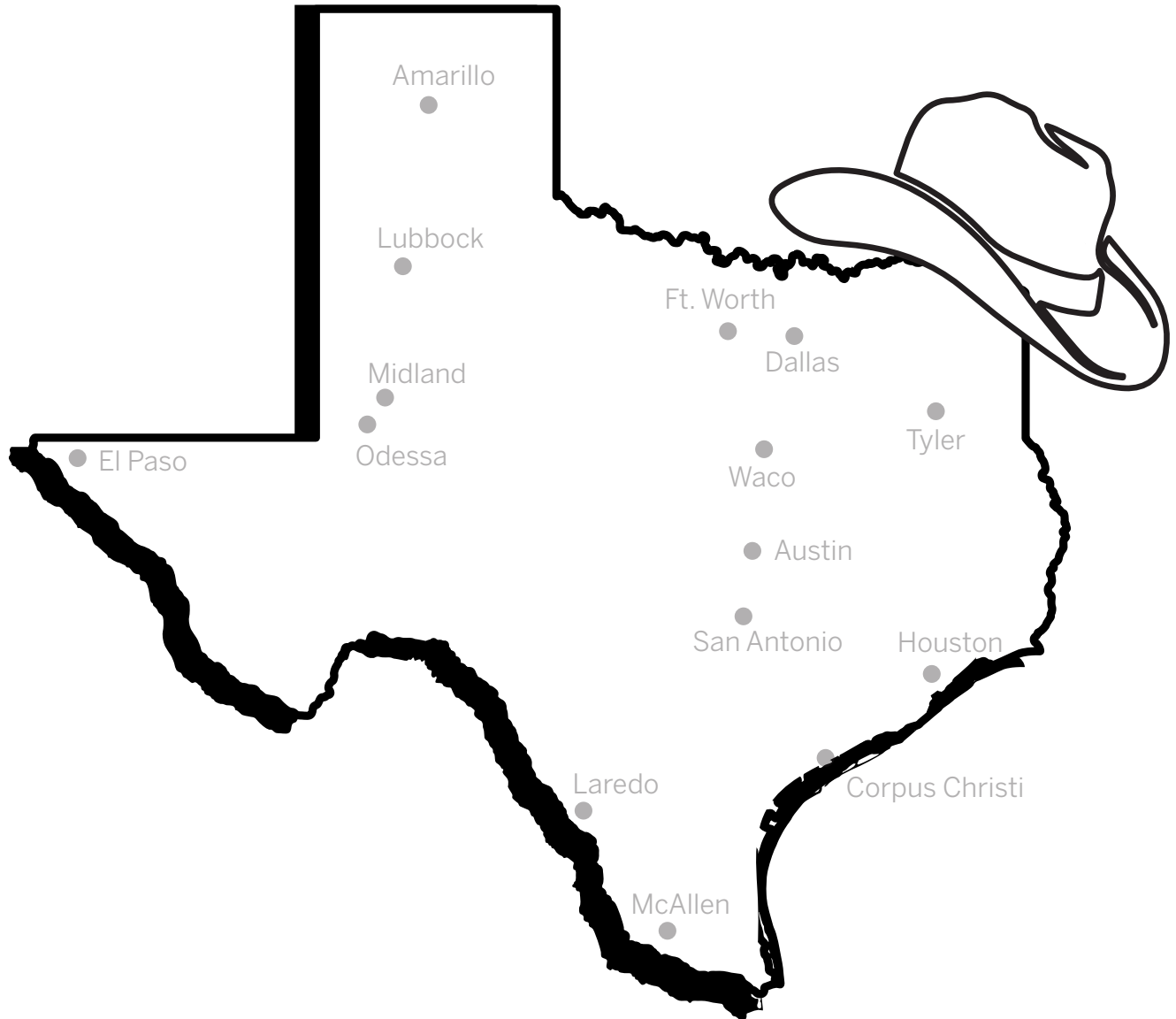
**FUN FACT:** Hogs and pigs are known as swine. Many foods come from these animals.

Read the word below. Then print the word.

swine



# TEXAS



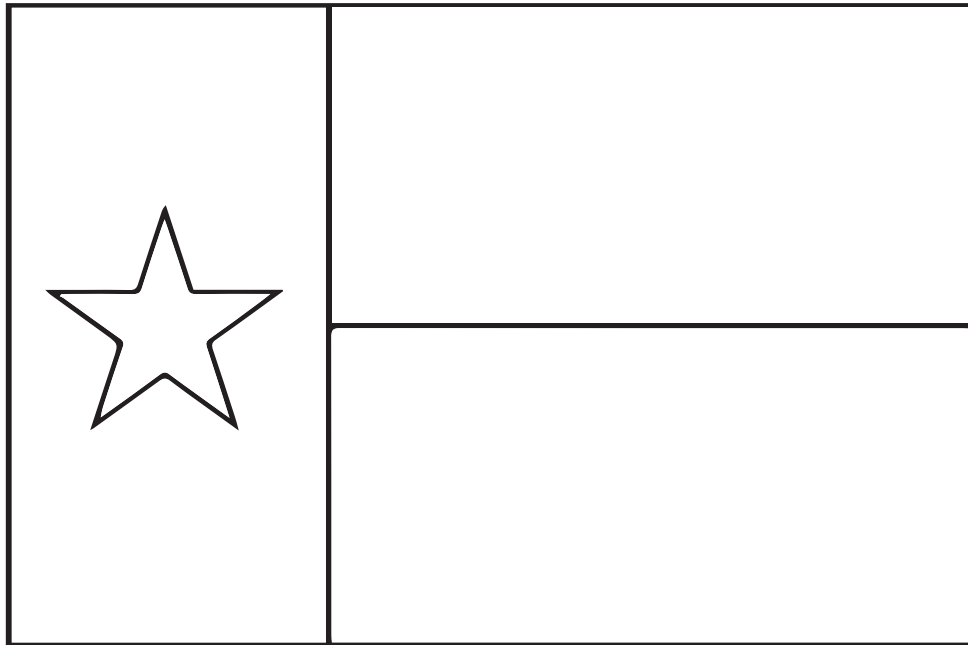
**FUN FACT:** Texas is a big state. It is the second largest state in the United States.

**BONUS:** Draw a ✓ on the spot where you live in Texas!

Read the word below. Then print the word.

Texas

# TEXAS LONE STAR FLAG



**FUN FACT:** The Lone Star flag is a red, white and blue flag that represents Texas. The blue stands for loyalty, white for purity, and red for bravery.

Read the word below. Then print the word.

Lone Star

Read the word below. Then print the word.

Flag

# TEXAS LONGHORN

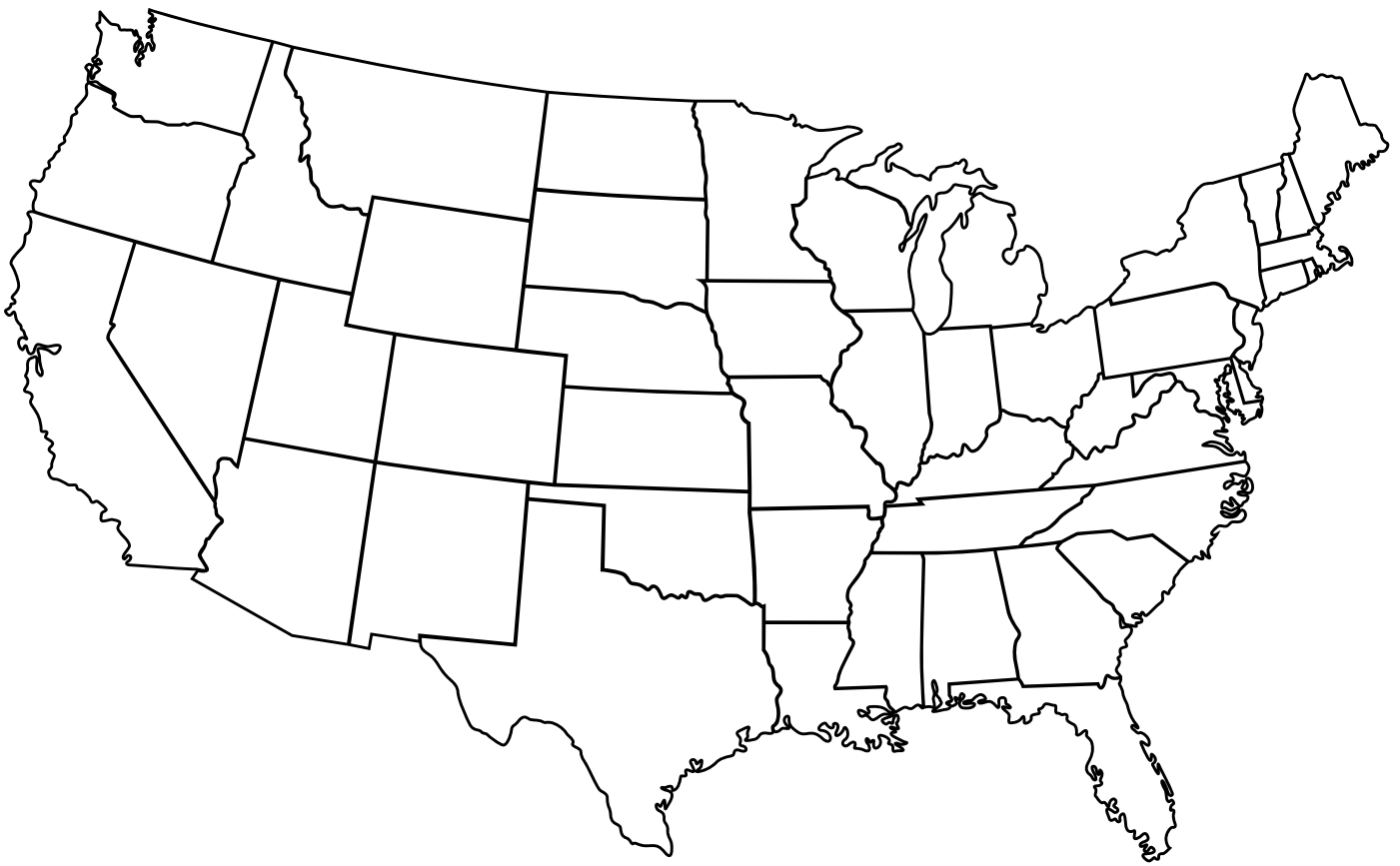


**FUN FACT:** The Texas state large mammal is the Longhorn. The Texas Longhorn has long, curved horns that spread out wide.

Read the word below. Then print the word.

Texas Longhorn

# UNITED STATES

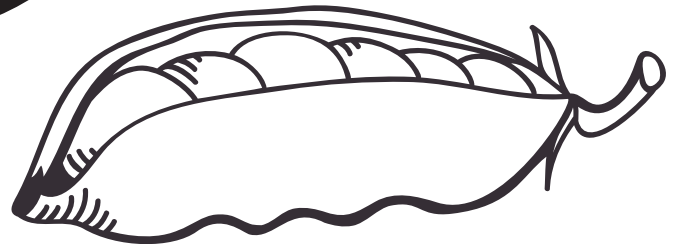
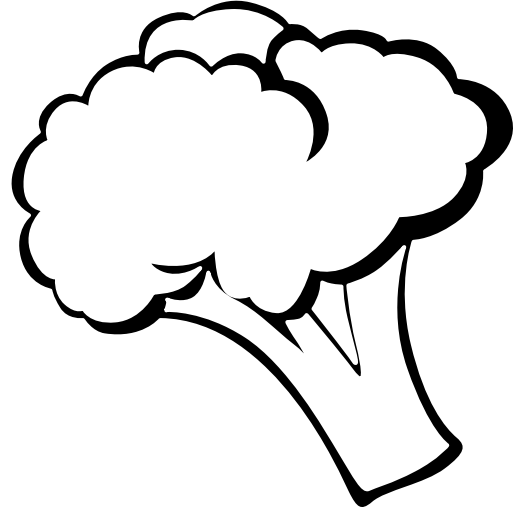
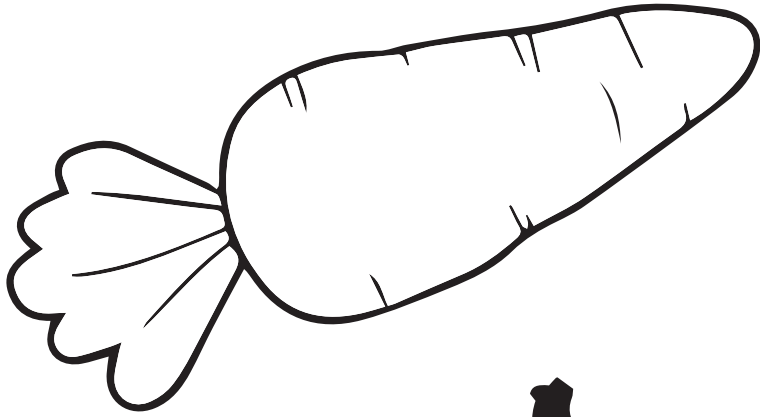


**FUN FACT:** Texas is located in the south central part of the United States.

Read the word below. Then print the word.

United States

# VEGETABLES

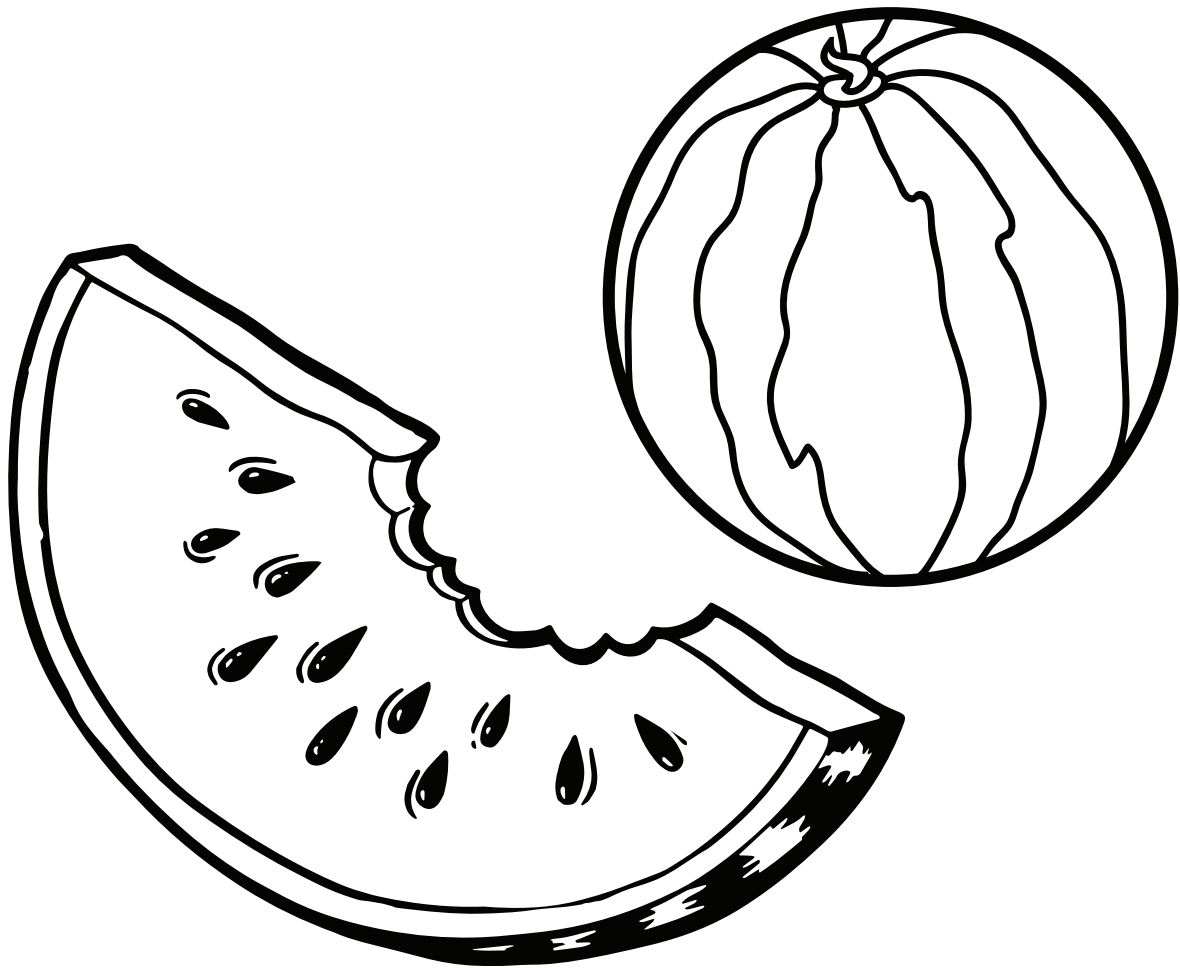


**FUN FACT:** A number of different vegetables are grown in Texas and are a good source of vitamins. The sweet onion is the state vegetable of Texas.

Read the word below. Then print the word.

vegetables

# WATERMELON



**FUN FACT:** Watermelon is a large, round fruit with smooth, green skin that is red and juicy inside.

Read the word below. Then print the word.

watermelon

# WHEAT

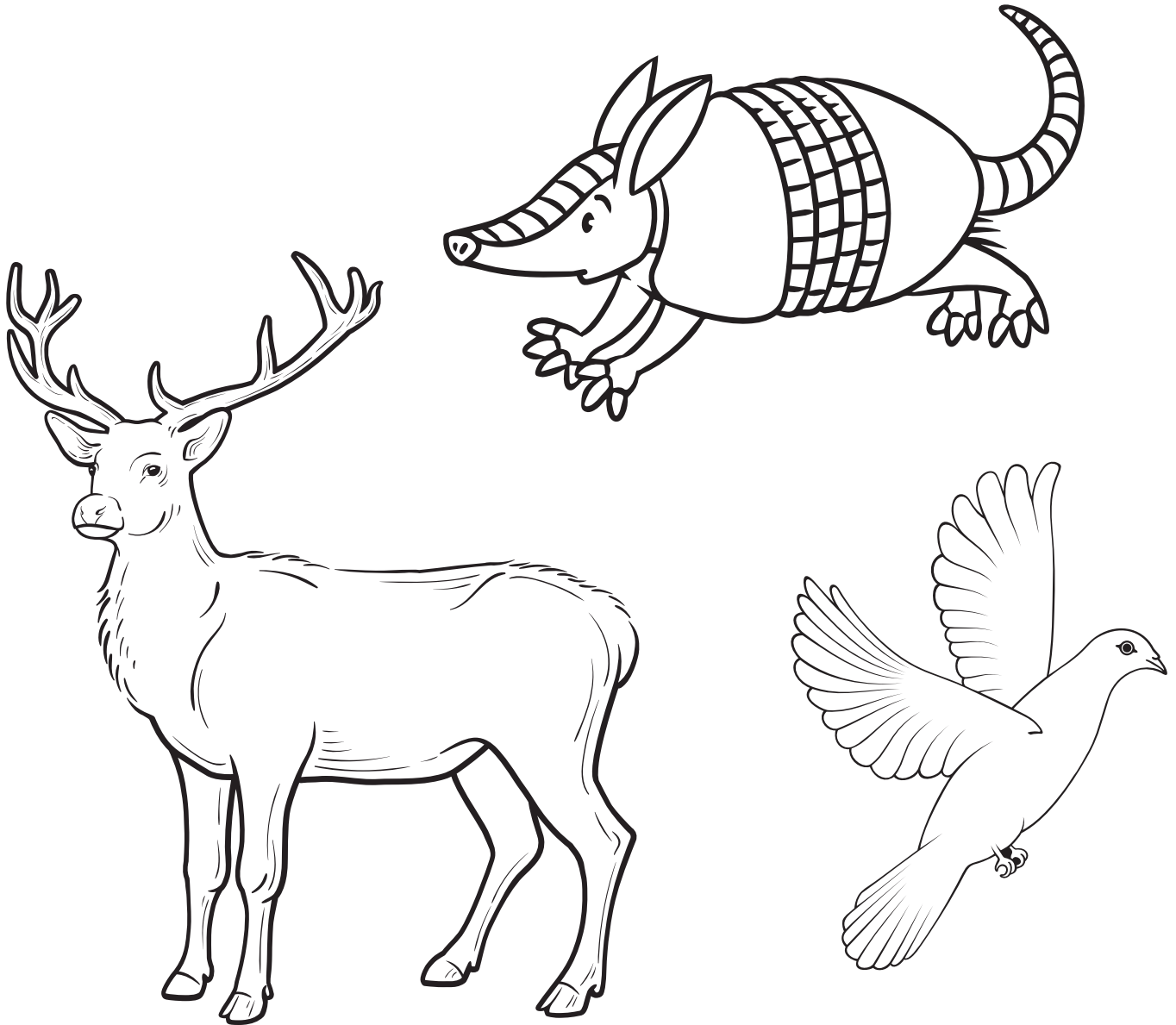


**FUN FACT:** Flour is made from wheat and is used to make bread and cookies.

Read the word below. Then print the word.

wheat

# WILDLIFE



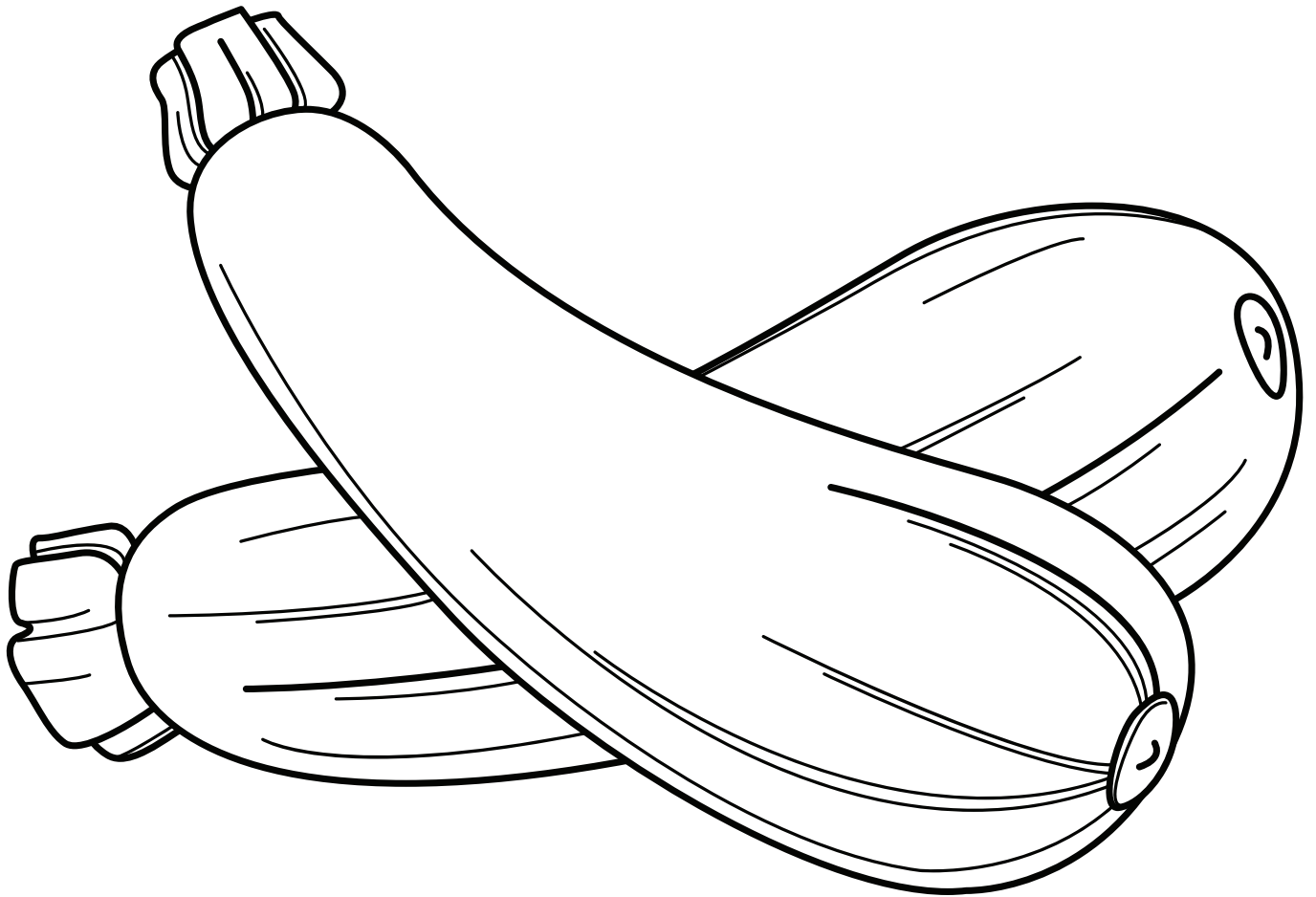
**FUN FACT:** Several kinds of wildlife live everywhere in Texas. The Texas state small mammal is the armadillo.

Read the word below. Then print the word.

wildlife



# ZUCCHINI



**FUN FACT:** Zucchini is a vegetable that is green or yellow in color and can be planted in the fall or spring.

Read the word below. Then print the word.

zucchini

# BONUS!

DRAW YOUR FAVORITE FARM ANIMAL!

