



TEXAS FARM BUREAU®



SHEEP

ACTIVITY BOOK

This book belongs to:

COLOR THE SHEEP



Use the descriptions of the three species of hair sheep to color the outlines correctly.

DORPER

- White body
- Black head
- Polled

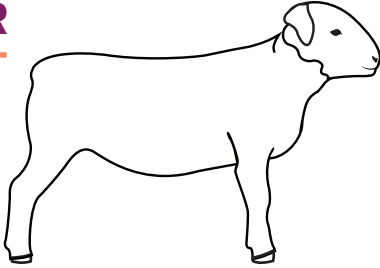
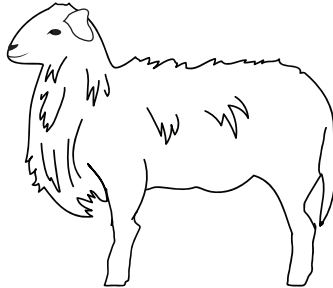


Photo courtesy St. Croix International Sheep Association

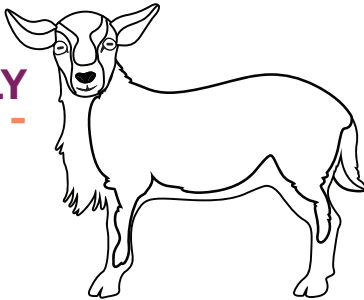


ST. CROIX

- Almost completely white body
- Occasionally very small dark spots or dark around the eyes
- Polled

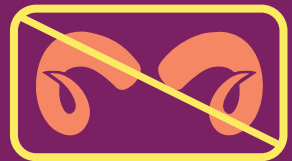
BARBADOS BLACKBELLY

- Tan body
- Black belly
- Black spotted face
- Polled



DID YOU KNOW?

“Polled” means the sheep is born without horns and cannot grow them!



FUN FACT

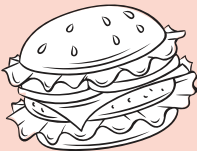
THERE ARE
TWO
CATEGORIES
OF **SHEEP**:

HAIR SHEEP

Raised for their meat



Lamb burger



Lamb chop

WOOL SHEEP

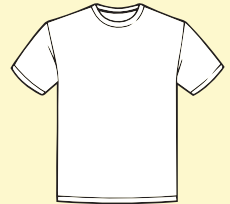
Raised for their wool



DID YOU KNOW?
Wool sheep are **also** used for meat.

Clothing

Yarn



Let's learn some vocabulary

EWE: female sheep

RAM: male sheep that can reproduce

WETHER: male sheep that cannot reproduce

FLOCK: a group of sheep

LAMB: a sheep that is less than one year old

LAMBING: the time a baby lamb is born

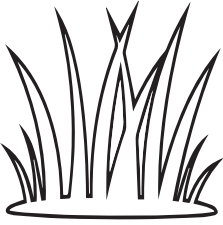


FOOD TALK

Herbivores eat plants.
Carnivores eat meat.
Omnivores eat both.

SHEEP ARE **HERBIVORES!**

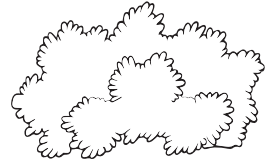
Color the food they can eat!



Grass



Forbs



Browse

Do sheep eat **plants** or **meat**? *Mark the correct answer.*

PLANTS

MEAT

DID YOU KNOW?

Sheep are **prey** animals.
Prey animals are eaten by other
animals (predators) for food.

Label the predators below!



Educational Outreach

P.O. Box 2689 | Waco, TX 76702-2689

edoutreach@txfb.org | 254-751-2258