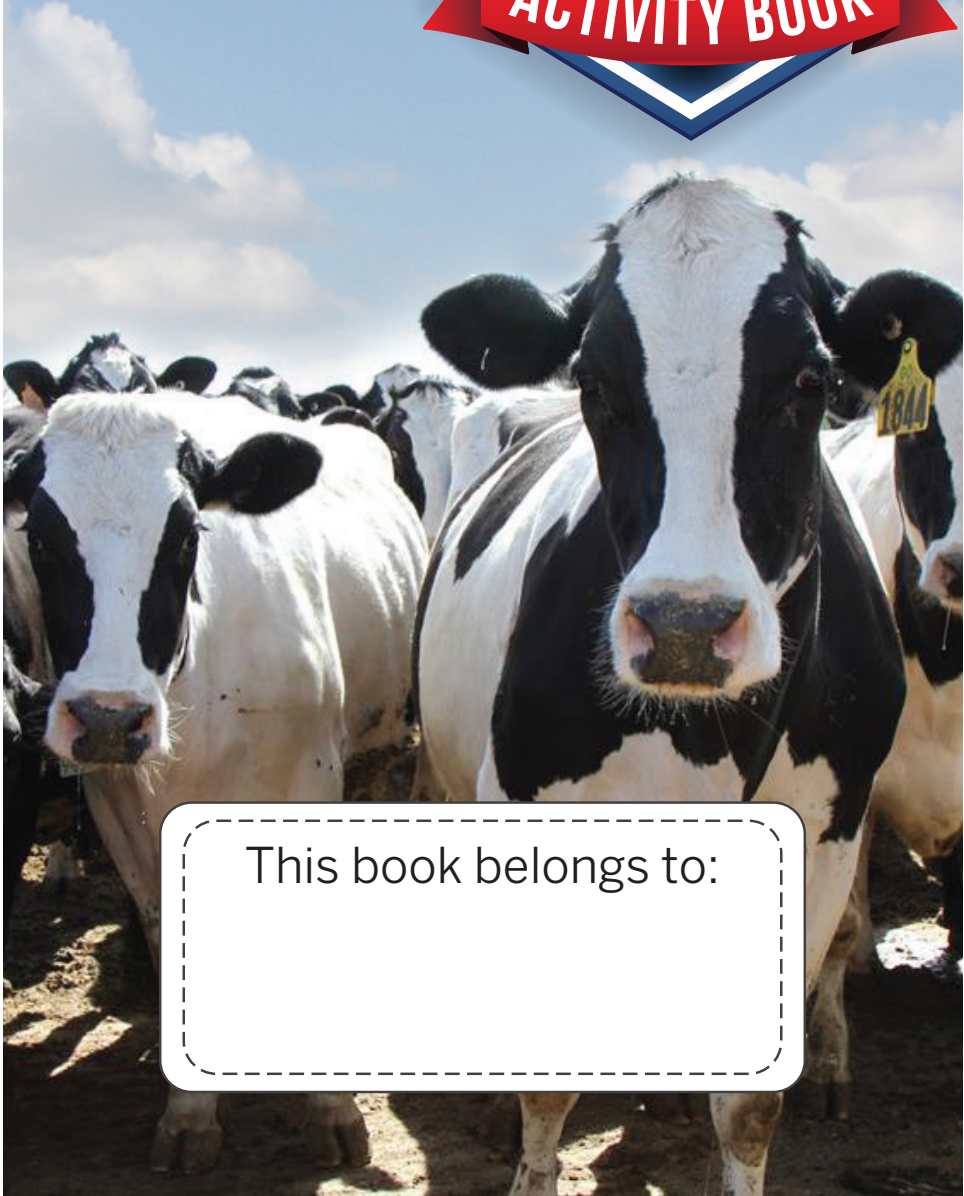




TEXAS FARM BUREAU®

# DAIRY

ACTIVITY BOOK



This book belongs to:

# Dairy Terms to Know

- Dairy cow** A type of cow used to produce milk.
- Holstein** A breed of dairy cow that produces the most milk.
- Milking parlor** The area on a dairy farm where the cows are milked.
- Herd** A group of dairy cows.
- Hay** Grasses that have been cut and baled to be fed to cattle.
- Udder** Cow's body part that produces milk.

## Did you know?

Cows produce over 80% of the milk in the world.

**What animal do you think is the second largest producer of milk?** \_\_\_\_\_

## Dairy Products

There are many items we eat and drink everyday that have dairy in them.



Circle your favorite item above. Ask a friend which is their favorite. \_\_\_\_\_

# Fun Fact!

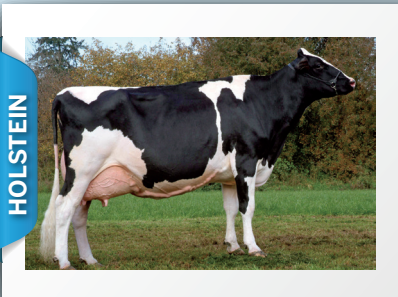
Dairy cows produce about eight gallons of milk per day. Color in eight 1-gallon milk jugs.



**Do the math:** Around how many gallons of milk can one cow produce in two days? \_\_\_\_\_  
(Hint:  $8+8$ )

## Dairy Cattle Breeds

There are seven main dairy cattle breeds in the United States. Two of the most common are Holstein and Jersey.



What are some similarities and differences between them? \_\_\_\_\_  
\_\_\_\_\_  
\_\_\_\_\_

# Journey of Milk

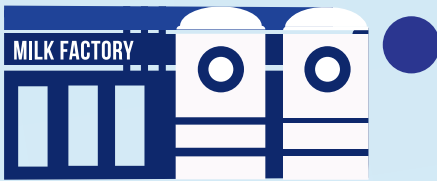
Draw an arrow to show how the milk goes from the farm to the grocery store. Use the word bank to fill in the blanks along the way.



Dairy cows are milked at the \_\_\_\_\_.



The milk is put on the \_\_\_\_\_.



It goes to the milk factory to be \_\_\_\_\_.



It is made into dairy products that we eat and \_\_\_\_\_.



Finally, it is on the shelves in the grocery \_\_\_\_\_.

## Word bank

(each word is used one time)

store

farm

truck

cleaned

drink



Educational Outreach  
P.O. Box 2689 | Waco, TX 76702-2689  
edoutreach@txfb.org | 254-751-2258