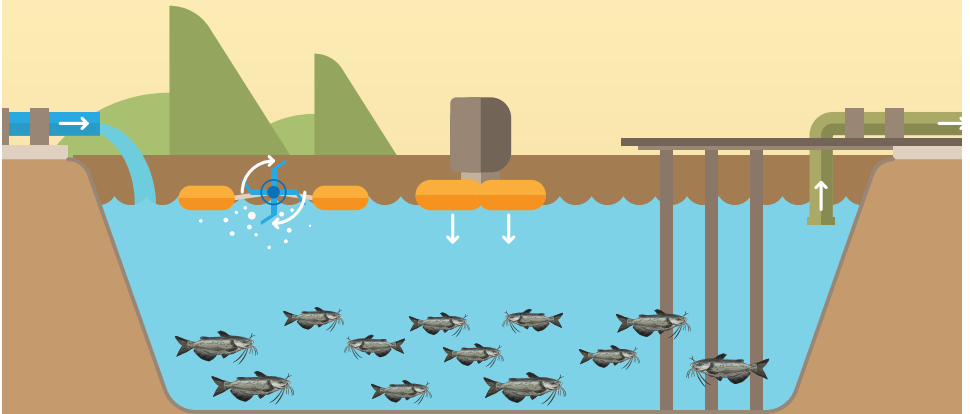




TEXAS FARM BUREAU®



Catfish Farming Activity Book



This book belongs to:



Photo courtesy of Dr. David Cline

Test your knowledge!

1. What do you observe (or see) when you look at the catfish? _____

2. What do you think catfish eat?

Circle your answer below: True or False.

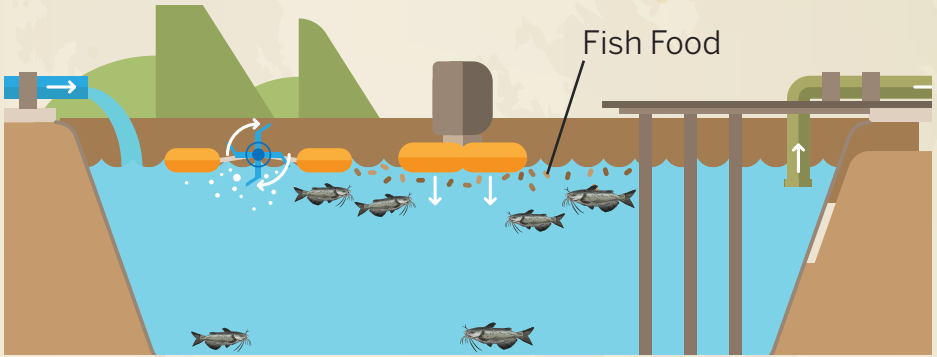
3. True or False: Catfish grow in fresh water rather than saltwater (like seafood).
4. How long do you think it takes for a catfish to grow to one pound? _____

Draw Your Catfish

Catfish don't have scales. They have skin! Draw your own catfish below.

Did you know?

Catfish feed floats on top of the water and fish swim to the top to eat the feed.



Compare and Contrast

Compare the feed for cows and the feed for catfish. Circle the ingredients that are the same.

CORN

SOYBEAN MEAL

HAY

COTTONSEED

RICE

SOYBEAN HULL

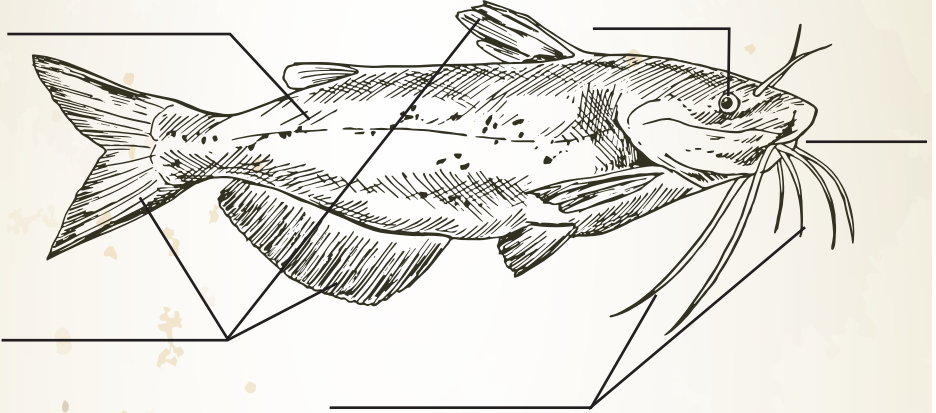
What ingredient do catfish eat that cows do not eat? _____



Label the catfish

Word Bank

barbels fins mouth skin eyes

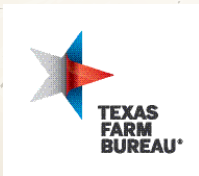


Did you know?

Catfish get their name from the barbels on their head that look like cat whiskers!

Think about it

What would your fish farm look like if you were a fish farmer? Draw your fish farm below.



Educational Outreach
P.O. Box 2689 | Waco, TX 76702-2689
edoutreach@txfb.org | 254-751-2258