



Texas Chicken and Egg Report

Southern Plains Regional Field Office · Post Office Box 70, Austin, Texas 78767 · 800-626-3142 · www.nass.usda.gov
Cooperating with the Oklahoma Department of Agriculture, Food and Forestry and Texas Department of Agriculture

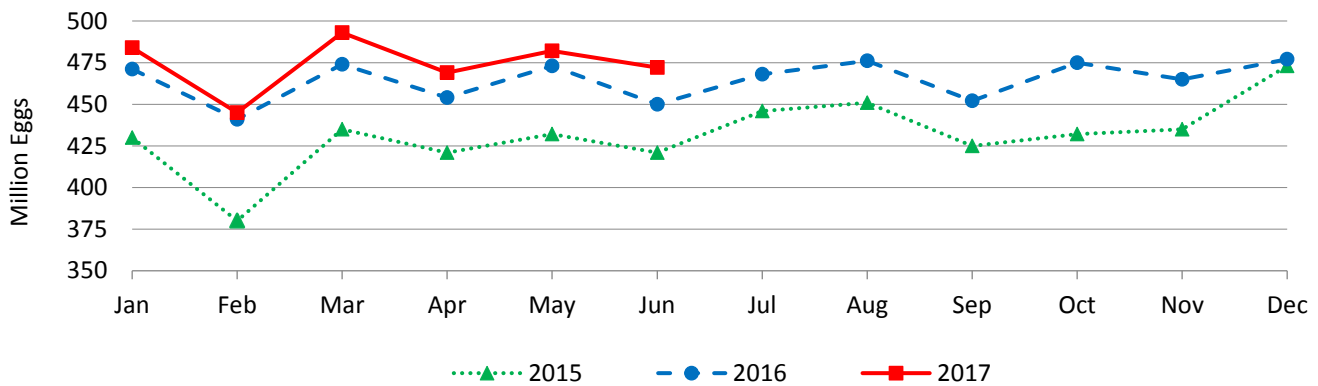
July 21, 2017

Contact: [Eun Kang](#) or [Jason Hardegee](#)

This report contains the results from the July 2017 Chicken and Egg Survey. The estimates in this report are based on a monthly survey of contractors and independent producers who have at least 30,000 laying hens for table egg and/or hatchery supply. We would like to thank all producers whose responses to the survey made these estimates for Texas possible. Results from the next monthly survey will be made available on August 22, 2017.

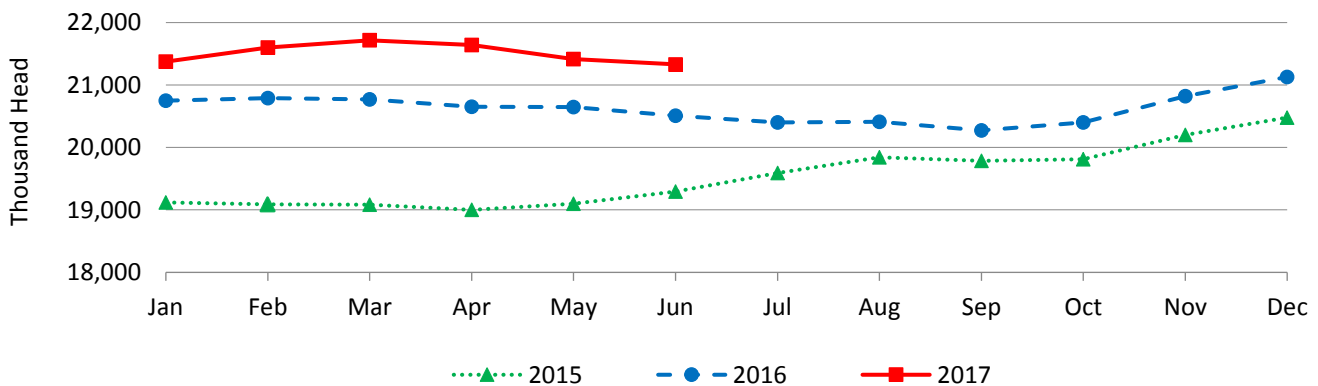
June 2017 egg production in Texas totaled 472 million eggs, up 5 percent from June 2016, but down 2 percent from May 2017.

Texas Monthly Egg Production

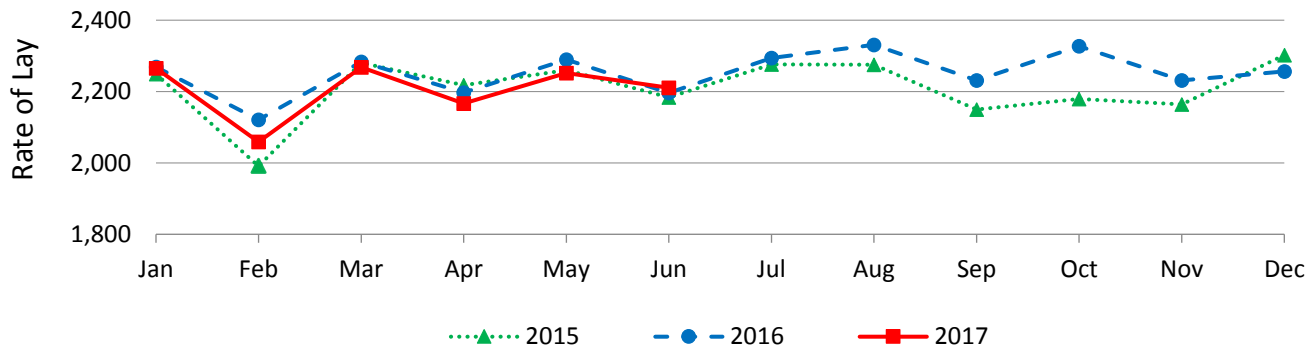


The number of layers during June 2017 averaged 21.3 million, 4 percent higher than last year, but slightly lower than May 2017. Egg production per 100 layers averaged 2,211 eggs, up from last year's 2,196 eggs, and down from last month's 2,252 eggs.

Texas Average Layers During the Month



Texas Monthly Eggs Produced Per 100 Layers



U.S. Highlights: United States egg production totaled 8.58 billion eggs during June 2017, 3 percent above a year ago. Production included 7.47 billion table eggs, 1.03 billion broiler-type hatching eggs and 73.0 million egg-type hatching eggs. Nationally, the total number of layers averaged 370 million during June 2017, up 1 percent from a year ago. Production per 100 layers was 2,316 eggs during June, up 1 percent from last year.

The U.S. monthly hatch of egg-type chicks totaled 49.0 million, 15 percent lower than June 2016. The hatch of broiler-type chicks, at 802 million, was 2 percent higher than June of last year. The leading U.S. breeders placed 8.59 million broiler-type pullet chicks for future domestic hatchery supply flocks during June 2017, up 1 percent from June 2016.

NASS is the federal statistical agency responsible for producing official data about U.S. agriculture and is committed to providing timely, accurate and useful statistics in service to U.S. agriculture. We invite you to provide occasional feedback on our products and services. Sign up at http://bit.ly/NASS_Subscriptions and look for the "NASS Data User Community."

Link to U.S. Report: <http://usda.mannlib.cornell.edu/MannUsda/viewDocumentInfo.do?documentID=1028>