



Cattle on Feed

Southern Plains Regional Field Office · Post Office Box 70, Austin, Texas 78767 · 800-626-3142 · www.nass.usda.gov
Cooperating with the Oklahoma Department of Agriculture, Food and Forestry and Texas Department of Agriculture

July 21, 2017

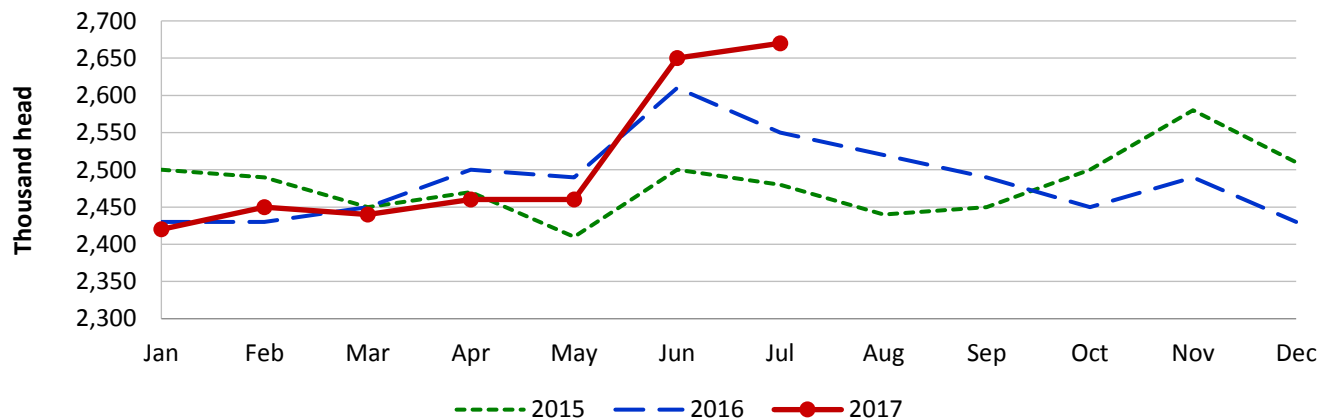
Contact: [Carol Pittman](#) or [Jason Hardegree](#)

This report contains results from the July 2017 Cattle on Feed Survey collected during the first two weeks of July. Data provided by Oklahoma and Texas producers are the foundation of the estimates made for the Southern Plains region. We would like to thank all producers who responded to the survey. Results from the next monthly survey will be made available on August 25, 2017.

Cattle and calves on feed for slaughter market in **Texas** feedlots with capacity of 1,000 head or more totaled 2.67 million head on July 1, 2017, up 5 percent from a year ago. Producers placed 450 thousand head in commercial feedlots during June, up 18 percent from a year ago. Texas commercial feeders marketed 420 thousand head during June, down 2 percent from 2016.

On July 1, there were 2.35 million head of cattle and calves on feed in the Northern High Plains, 88 percent of the state's total. The number on feed across the area was up 5 percent from last year and up slightly from the June 1 total. June placements in the Northern High Plains totaled 378 thousand head, down 31 percent from the May total. Marketings were down 4 percent from last month at 368 thousand head.

Texas Cattle on Feed Inventory

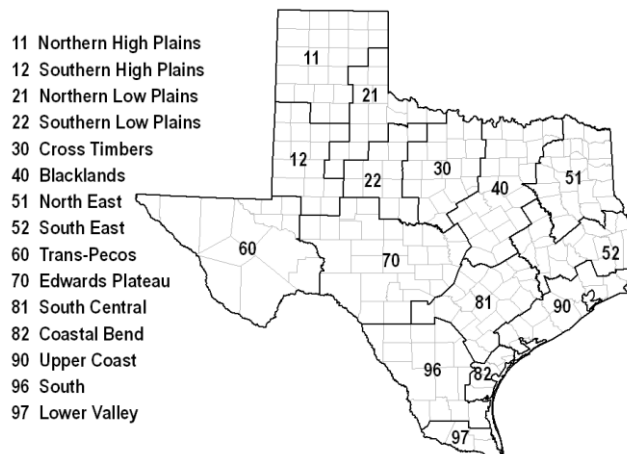


Texas Cattle and Calves on Feed in 1,000+ Capacity Feedlots, by District

Cattle and Calves	District 11	District 12	District 21	District 70	District 81	District 96	Other districts	State total
1,000 head								
On feed June 1, 2017 ¹	2,346	138	44	16	30	54	22	2,650
Placed on feed during June	378	35	9	4	10	12	2	450
Fed cattle marketed during June	368	29	7	3	4	7	2	420
Other disappearance during June ²	9	1	0	0	0	0	0	10
On feed July 1, 2017 ¹	2,347	143	46	17	36	59	22	2,670

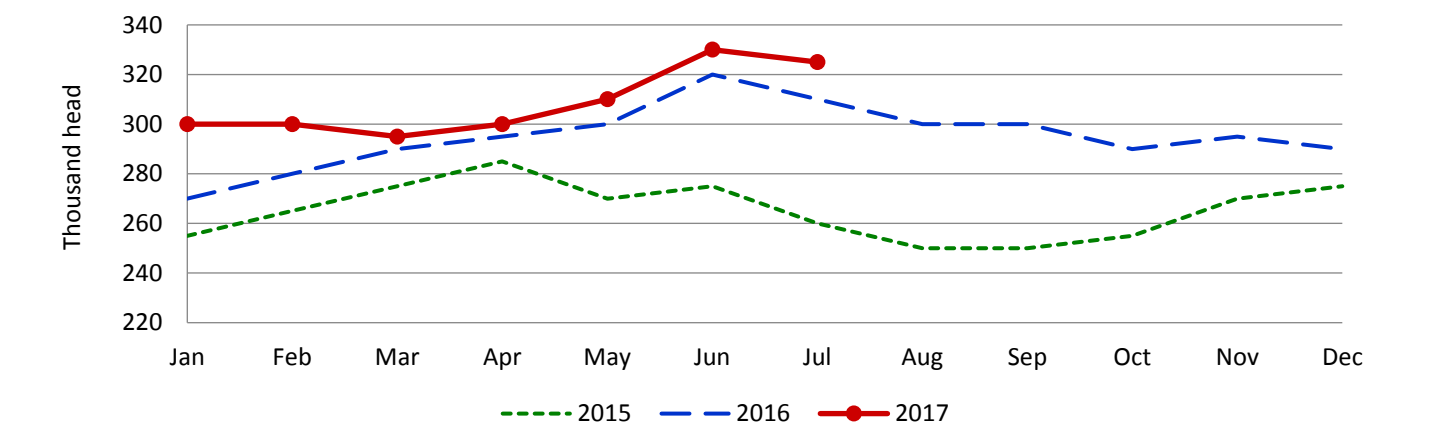
¹ Cattle and calves on feed are animals for slaughter market being fed a ration of grain or other concentrates and are expected to produce a carcass that will grade select or better.

² Included death losses, movement from feedlots to pasture and shipments to other feedlots for further feeding.



Cattle and calves on feed for slaughter market in **Oklahoma** feedlots with capacity of 1,000 head or more totaled 325 thousand head on July 1, 2017, up 5 percent from a year ago. Producers placed 51 thousand head in commercial feedlots during June, up 21 percent from a year ago. Oklahoma commercial feeders marketed 55 thousand head during June, up 8 percent from 2016. Other disappearance during June totaled 1 thousand head, down 1 thousand head from a year ago.

Oklahoma Cattle on Feed Inventory



Cattle and Calves: Placements, Marketings, Other Disappearance and Inventory in 1,000+ Capacity Feedlot										
State	Cattle and Calves									
	On feed June 1		Placed on feed during June		Marketed during June		Other Disappearance during June		On feed July 1	
	2016	2017	2016	2017	2016	2017	2016	2017	2016	2017
	1,000 head		1,000 head		1,000 head		1,000 head		1,000 head	
Arizona.....	300	246	19	22	27	21	6	1	286	246
California.....	415	440	58	56	45	52	3	4	425	440
Colorado	890	970	105	125	140	160	5	5	850	930
Idaho.....	245	270	38	35	47	43	1	2	235	260
Iowa	630	680	54	72	72	80	2	2	610	670
Kansas.....	2,160	2,270	350	395	450	465	10	10	2,050	2,190
Minnesota	154	145	12	15	20	19	1	1	145	140
Nebraska.....	2,340	2,350	365	425	510	530	15	15	2,180	2,230
Oklahoma.....	320	330	42	51	51	55	1	1	310	325
South Dakota	250	240	24	40	36	53	3	2	235	225
Texas.....	2,610	2,650	380	450	430	420	10	10	2,550	2,670
Washington.....	195	205	41	40	40	39	1	1	195	205
Other States.....	295	300	37	44	44	52	3	2	285	290
United States	10,804	11,096	1,525	1,770	1,912	1,989	61	56	10,356	10,821

Cattle on Feed: Number Placed on Feed by Weight Group, 1,000+ Capacity Feedlots ¹						
State	During June 2016					
	Under 600 lbs	600-699 lbs	700-799 lbs	800-899 lbs	900+lbs ²	Total
	1,000 head	1,000 head	1,000 head	1,000 head	1,000 head	1,000 head
Colorado	15	15	30	20	25	105
Kansas.....	55	65	90	95	45	350
Nebraska.....	30	50	70	105	110	365
Texas.....	115	85	90	65	25	380
Other States.....	75	40	60	90	60	325
United States	290	255	340	375	265	1,525
State	During June 2017					
	Under 600 lbs	600-699 lbs	700-799 lbs	800-899 lbs	900+ lbs ²	Total
	1,000 head	1,000 head	1,000 head	1,000 head	1,000 head	1,000 head
Colorado	25	25	35	20	20	125
Kansas.....	65	80	110	95	45	395
Nebraska.....	35	55	105	110	120	425
Texas.....	155	105	105	65	20	450
Other States.....	95	50	75	95	60	375
United States	375	315	430	385	265	1,770

¹ Oklahoma is included in *Other States*.
² For the U.S., the 900+ category represents the sum of 900-999 pound and 1,000+ pound weight groups.