



TEXAS FARM BUREAU  
83rd ANNUAL MEETING

DECEMBER 3-5, 2016 | SAN ANTONIO



TEXAS  
FARM  
BUREAU<sup>®</sup>



# Table of Contents

President’s Message.....4

Board of Directors .....5

District Caucuses.....5

Schedule of Events ..... 6-8

Distinguished Service Award .....9

County Activities of Excellence Awards Program..... 10

Outstanding YF&R Finalists ..... 11-12

Outstanding YF&R District Winners ..... 12-14

Excellence in Agriculture Finalists ..... 15-16

Outstanding AITC Teacher Award..... 17

Free Enterprise Speech Contestants ..... 18

Scholarship Winners..... 19-26

Pioneer Award Winners ..... 27-28

2016 Top Ten Counties .....29-30

Resolutions Committee.....31-32

TFB Member Benefits & Services .....33

# President's Message



**Russell W. Boening**  
*President*  
*Texas Farm Bureau*

The member-families of Texas Farm Bureau will return to one of our favorite convention cities this year—San Antonio. The Alamo City is the cradle of Texas liberty and it holds a special place in the hearts of Texans everywhere.

There is a lot to see in San Antonio, but we also have important work to do. Voting delegates will shape the policy that will guide our efforts in the coming year. It's up to us to provide the direction for our organization. It is always gratifying to see how seriously you take that obligation. It is part of what makes us successful.

As the state convention comes to order, we will celebrate a membership achievement that, personally, means a lot to me. Achieving a membership gain in 2016 was, at times, a struggle. We wouldn't have made it without the efforts of everyone from every company, division and county in our organization. As president, you all have my heartfelt gratitude for all the work you did to achieve our goal.

We have many achievements to celebrate as well. Even more important are the goals we have ahead of us. I look forward to the policy discussions as we set the stage for what we always expect in Texas Farm Bureau—another successful year. I'm looking forward to seeing you in San Antonio.

# Board of Directors

District 1	Robert H. Gordon	Dallam County
District 2	Dan B. Smith	Floyd County
District 3	Michael White	Wilbarger County
District 4	Ben F. Wible	Grayson County
District 5	Mark Chamblee	Smith County
District 6	Val Stephens	Dawson County
District 7	Jessica Richmond	Comanche County
District 8	Neil F. Walter	Coryell County
District 9	Larry Joiner	Angelina County
District 10	Ronnie Muennink	Medina County
District 11	Robert E. Reed	Matagorda County
District 12	Zachary X. Yanta	Karnes County
District 13	Scott Frazier	Nueces County

# District Caucuses

District 1	Room 11
District 2	Room 7
District 3	Room 6
District 4	Salon J
District 5	Rooms 1 & 2
District 6	Room 12
District 7	Room 8
District 8	Salon I
District 9	Rooms 13 & 14
District 10	Salon K
District 11	Salon M
District 12	Salon L
District 13	Room 4

# Schedule of Events

All activities will be at the San Antonio Marriott Rivercenter Hotel

## Saturday, December 3

### Salon E Foyer

- Registration .....10:00 a.m.-5:00 p.m.
- Young Farmer & Rancher Silent Auction
- Member Services Exhibits
- County Activities of Excellence (CAE) Display

### Rooms 7 & 8

- Discussion Meet Semi-Finals .....10:00 a.m.
- Discussion Meet Semi-Finals .....12:00 p.m.

### Salon E

- Discussion Meet Finals..... 2:00 p.m.
- Free Enterprise Speech Contest..... 3:00 p.m.
- YF&R Social (40 and under) ..... 6:00 p.m.-7:00 p.m.

*Dave & Buster's*  
*Rivercenter Mall, 2nd Floor*

## Sunday, December 4

### Salon E Foyer

- Registration .....8:30 a.m.-5:30 p.m.
- Young Farmer & Rancher Silent Auction
- Young Farmer & Rancher Education Pavilion
- Member Services Exhibits
- County Activities of Excellence (CAE) Display
- County Delegation Pictures

### Salon E

- Opening Session ..... 9:00 a.m.-11:30 a.m.
- Devotional

Texas Farm Bureau 83rd Annual Meeting

# Schedule of Events

- Distinguished Service Award
- Pioneer Recognition
- Media Awards
- Membership Recognition
- County Activities of Excellence Award
- Public Relations Awards
- Outstanding Ag in the Classroom Teacher Award
- Lunch on your own

YF&R Silent Auction closes.....1:20 p.m.

*Salon E*

- General Session ..... 1:30 p.m.-3:30 p.m.
- Welcome
- YF&R Recognition
- President’s Address
- Most Outstanding County Farm Bureau Award
- YF&R Live Auction

Vernie Glasson Reception ..... 3:30 p.m.

District Caucuses ..... 4:30 p.m.  
(See locations, page 5)

*The Buckhorn Museum-The Toepperwein Room*

Texas Farm Bureau AGFUND Dinner ..... 6:30 p.m.  
(Senior cabinet members only–ticketed event)

**Monday, December 5**

*Salon E Foyer*

- Registration ..... 7:30 a.m.
- County Delegation Pictures
- YF&R Silent Auction Pick-up

Texas Farm Bureau 83rd Annual Meeting

# Schedule of Events *(Continued)*

*Salon E*

- Business Session..... 8:30 a.m.-11:30 a.m.
- Credentials Committee Report
- Introduction of Resolutions Committee
- Convention Minutes Approval
- Adoption of Convention Rules
- Secretary-Treasurer’s Report
- Administrative Report
- Consideration of Bylaw Amendments
- Consideration of State and National Resolutions
- Lt. Governor Dan Patrick

*Salons I & J*

- Ladies Luncheon ..... Noon-1:30 p.m.

*Salons G,H,K,L & M*

- Voting Delegate Luncheon..... Noon-1:30 p.m.

*Salon E*

- Reconvene Business Session ..... 1:30 p.m.
- Supplemental Credentials Report
- Consideration of Resolutions (*continued*)
- Final Credentials Report
- Election of Directors
- Adjourn

*Coffee Breaks sponsored by:*  
 Southern Farm Bureau Life  
 Insurance Company



# Distinguished Service Award



**Vernie Glasson**

**Vernie R. Glasson III** retired in July 2016 as Executive Director and Chief Operating Officer of the Texas Farm Bureau and its affiliated companies. He was named to the organization's top position in 1989 by its board of directors. He worked under five different Presidents and dozens of farmers and ranchers who served on the board of directors.

Glasson helped shape Texas Farm Bureau for the many changes affecting rural Texas and agriculture. He emphasized building the organization's financial strength and becoming a major influence in Texas politics.

Glasson is a native of San Patricio County, where he grew up on a cotton and grain farm. He graduated from Texas A&I University in Kingsville, joined the U.S. Air Force and served a tour of duty in Vietnam.

He began his Farm Bureau career in 1973, working as a field representative and a commodity director before moving to Washington, D.C. as a lobbyist for the American Farm Bureau Federation. He led the national legislative team for AFBF.

He rejoined Texas Farm Bureau in 1984 and was instrumental in the formation of TFB's political action committee, AGFUND.

Glasson and his wife, Ann, continue to reside in the Waco area. They have four grown children with families and seven grandchildren. In retirement, they spend a lot of time working on their farm in Coryell County.

# AFBF County Activities of Excellence Awards Program

This year, one of our county Farm Bureaus was selected as a winner of the American Farm Bureau Federation's (AFBF) County Activities of Excellence (CAE) Awards Program.

Farm Bureau is a grassroots organization that has been effective for more than 90 years, thanks to the innovative, action-oriented programs developed by county Farm Bureaus. The AFBF County Activities of Excellence Awards are designed to celebrate and recognize unique volunteer-driven programming at the local level. County Farm Bureaus across the nation are encouraged to enter their successful activity in this contest.

This year, 154 county Farm Bureaus across the nation entered their activity to be judged. The top 24 counties selected will display their winning activity during the AFBF Annual Convention Tradeshow in Phoenix, Arizona. The county also receives a \$2,250 cash award. This cash award will be applied toward the cost of travel and exhibiting at the AFBF Annual Convention. Cherokee County will be representing Texas Farm Bureau.

## County Activities of Excellence Awards Program

This marks the third year of a statewide County Activities of Excellence Awards Program. This program coincides with the American Farm Bureau Federation CAE contest. Judging done by other states selected the top three out of 16 Texas counties that submitted entries. The top three counties are Cherokee, McCulloch and Shelby. Be sure to visit their displays in the foyer to learn more about their activity. Each of these counties will receive cash awards of \$1,250.

# 2016 Outstanding Young Farmer & Rancher Finalists

The Outstanding Young Farmer & Rancher Contest is designed to identify, recognize and reward exceptional young agricultural farmers and ranchers from across the state. This contest gives young farmers and ranchers an opportunity to highlight the growth and development of their agricultural operations.

## Layne and Jamie Chapman



The Chapmans grow irrigated and dryland cotton, corn and wheat using no-till farming methods. They also run stockers on their wheat pasture to help offset the volatility of the grain market. Layne is vice president of the Wilbarger County Farm Bureau and the couple previously served as chairs of the Texas Farm Bureau

Young Farmer & Rancher Advisory Committee. Jamie also owns Pepperberries, a gift shop in downtown Vernon. The couple has one son, Jaxon.

## Marcus and Amy Halfmann



Marcus and Amy Halfmann grow cotton, wheat and hay in Midland County. They raise cattle as well. Marcus also has a custom farm business and uses cotton burrs, or gin trash, to create his own compost. Amy is a dietitian and consults with individuals, as well as local nursing homes and a head start program. Marcus is vice president of the Midland

County Farm Bureau. The Halfmanns have a son, Byler, daughter, Blakley; and are expecting a third child next year.

# 2016 Outstanding Young Farmer & Rancher Finalists

## **Matt and Jessica Hanslik**



Matt and Jessica Hanslik have a cow-calf operation and raise purebred Charolais bulls. They are part owners of an all-natural fertilizer company, grow corn and hay and also raise cattle through a family partnership. The fertilizer company recycles dry poultry litter from a shell egg facility and provides custom application

for farms and ranches. Jessica is a regional sales manager for a local shell egg producer. Matt serves on the Lavaca County Farm Bureau board. The couple has one daughter, Blakely.

---

## 2016 Outstanding Young Farmer & Rancher District Winners

### District 1

#### **Jesse and Karri Wieners**

Jesse and Karri Wieners of Carson County grow cotton, milo and wheat, along with forage sorghum and alfalfa. They sell bulk hay across four states and sell their compressed box hay worldwide. They specialize in premium alfalfa that is delivered direct from their farm to feed stores. They supply premium feed to more than 100 ranches and two oil-field contractors use their straw bales for erosion and grass seeding. They also custom bale hay and custom strip cotton. The Wieners have three children.

# 2016 Outstanding Young Farmer & Rancher District Winners

## District 2

### **Alton and Adrienne Synatschk**

Alton and Adrienne Synatschk of Lamb County grow corn, cotton, sunflower, milo and irrigated and dryland wheat, and raise cattle. They also operate a custom spraying business. They run cow/calf pairs year round, on grass in the summer and on corn stalks in the winter. They run stocker calves on wheat during the winter months. The Synatschks have three children.

## District 4

### **Clint and Angela Rutledge**

Clint and Angela Rutledge of Grayson County grow corn, wheat, soybeans and milo, and raise cattle. They also are a hay seed dealer. Their cow/calf operation consists mostly of Angus-cross cows and Angus bulls. They manage pastures and Bermuda grass meadows for the cattle and sudan hay grazer for forage in the winter. The Rutledges have two children.

## District 5

### **Gregg and Cristole Beverly**

Gregg and Cristole Beverly of Van Zandt County grow hay and raise cattle. They grow coastal Bermuda and Tifton hay. Gregg provides mechanic services on equipment for several local farmers. Gregg also works as a fireman. They assumed operation of the family hay business in 2007. The Beverlys have three children.

# 2016 Outstanding Young Farmer & Rancher District Winners

## District 8

### **Ryan and Santanna Bay**

Ryan and Santanna Bay of Coryell County grow pecans. Their operation includes growing, harvesting, processing and shelling of pecans for direct-to-consumer marketing. They also custom harvest and provide orchard management for many landowners in their area. The Bays provide custom pecan cracking and shelling for the public, as well as pecan accumulating for sales to larger shelling facilities and exporters. The Bays have two children.

## District 9

### **Kent and Shayla Willmott**

Kent and Shayla Willmott of Anderson County grow hay and raise cattle. Calves are raised for beef, with a select number of heifers held back each year for herd replacement. The hay operation generates square and round horse-quality hay that is marketed in feed stores throughout the southern U.S., and they provide cow-quality hay to local customers. The Willmotts have one child.

## District 11

### **Tommy and Samantha Paben**

Tommy and Samantha Paben of Waller County grow corn, soybeans and hay, and raise cattle. Tommy is a sixth generation farmer/rancher in an area where it's getting harder to compete with urban encroachment. The Pabens operate 400 acres of their own, manage his family's cow/calf operation and are in partnership in a stocker operation where they buy calves and background them. The Pabens have two children.

## 2016 Excellence in Agriculture Finalists

The Excellence in Agriculture contest is an opportunity to recognize young people who are employed in an agricultural-related profession or are involved in agriculture, but earn the majority of their income from a non-farm source. This contest allows those people who work in agriculture and support farmers and ranchers to showcase what they do and demonstrate how their involvement in agriculture benefits the industry.

### Scott and Sara Holloway



Scott is a sales representative for Alltech, and Sara is a veterinarian at a rural, mixed animal practice—Cross Timbers Veterinary Hospital—in Bowie. She also helps to teach vet students at the local high school. The couple has a cow-calf operation and grows high-quality coastal hay. Scott is vice president of the Montague

County Farm Bureau. The couple has one son, Coleman, and a daughter, Charley Jane.

### Justin and Kacy Mitchell



Kacy is a rental equipment sales representative for ASCO Equipment, and Justin is a lease operator for XTO Energy. The couple raises commercial cattle and high-quality forage. They also operate a pecan orchard and have grown watermelons in recent years. They served on the Texas Farm Bureau Young Farmer & Rancher Advisory Committee, and Justin is a member of the current AgLead XIII class. Kacy

serves on the board of the Smith County Farm Bureau.

# 2016 Excellence in Agriculture Finalists

## Ryan and Jessica Railsback



Ryan manages the wildlife and cattle operations as the ranch foreman at Paraiso Escondido Ranch in Cisco. Jessica is a loan officer for Central Texas Farm Credit. They also raise Red Angus cattle in partnership with the ranch's owner. They are members of the Stephens County Farm Bureau and attend and assist with AgriLife Extension programs. The couple has one son, Reed, and one daughter, Kendall.

Contests proudly sponsored by:





# Agriculture in the Classroom

## Outstanding Teacher



**Hillarie Rollins** is a first grade teacher at Forest Ridge Elementary School in College Station. She graduated from Sam Houston State University in 2009 with a bachelor's degree in Interdisciplinary Studies EC-4. She has been teaching for 8 years. She previously taught kindergarten at Kemp Elementary for four years.

Rollins grew up in an urban community setting like most of her students. It wasn't until she continued her education as an adult that she realized the full impact of agriculture in everyday life. She realized most students do not have access to farms and they don't understand where their food comes from or how clothes are made. She uses her experience to help expose her students to agricultural concepts from a young age and to set a strong foundation for learning through creative hands-on activities and lesson plans in the classroom. She believes it is very crucial for children to understand and have exposure to the impact of American agriculture on their lives and their communities.

Rollins sparks interest and passion for agriculture education in her students and co-workers through planting and taking care of vegetable and flower gardens, and incubating chicks and watching them hatch.

Rollins credits the TFB Summer Ag Institute as a very valuable experience to help her gain the tools and skills she uses to incorporate agriculture into her classroom.

# 2016 Free Enterprise Speech Contestants

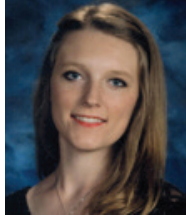
Noah Evans	Hemphill	District 1
Savana Ware	Crosby	District 2
M'Lynn Prewitt	Clay	District 3
Alyali Marcano	Dallas	District 4
Sheyenne Mitchell	Hopkins	District 5
Landyn Young	Howard	District 6
Riley McKinzie	Erath	District 7
Marshall Halfmann	Falls	District 8
Sarah Alders	Nacogdoches	District 9
Jacie Henefey	Medina	District 10
Sarah Parks	Austin	District 11
Cahil Murchison	Caldwell	District 12
Lauren Carrell	Live Oak	District 13

# 2016 District Scholarship Winners

## District 1



Dylan Davidson  
Childress County



Serena Harbour  
Hutchinson County



Laura Corder  
Randall County

## District 2



Ashton Link  
Lynn County

## District 3



Landry Vieth  
Archer County



Kaitlyn Gibson  
Wise County



Katherine Jones  
Wise County

# 2016 District Scholarship Winners

## District 4



Hannah Dast  
Denton County



Hannah Celella  
Kaufman County



Peyton Thomas  
Parker County

## District 5



Natalie Oud  
Franklin County



Stephen Mathews  
Harrison County



Jhett Jackson  
Wood County

## District 6



Ashley Luce  
Howard County



Bailey Hooten  
Tom Green County



Ashley Wilde  
Tom Green County

# 2016 District Scholarship Winners

## District 7



London Jones  
Erath County



Tarah Moore  
Erath County



Adam Multer  
Runnels County

## District 8



Raynie Bentke  
Burlison County

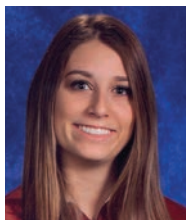


Samantha Merrifield  
McLennan County



Savannah Garcia  
Milam County

## District 9



Kailand Hodge  
Polk County



Kathryn Giese  
San Jacinto County



Tori Hughes  
Trinity County

# 2016 District Scholarship Winners

## District 10



Kylie Patterson  
Bexar County



Payton Miner  
Comal County



Maegan McKay  
Medina County

## District 11



Nathan Anders  
Fayette County



Caitlan Rabun  
Grimes County



Sara Zahn  
Wharton County

## District 12



Cory Mabry  
Calhoun County



Cassidy Bego  
Goliad County



Rayanne Muenich  
Victoria County

# 2016 District Scholarship Winners

## District 13



**Kenneth Miller**  
Cameron County



**Aaron Gonzalez**  
Hidalgo County



**Kailey Keach**  
Live Oak County

## YF&R Scholarship Winners



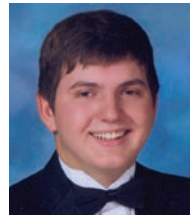
**Hailey Wright**  
District 1  
Collingsworth County



**Alicia Straley**  
District 2  
Castro County



**Mardi Wisdom**  
District 3  
Foard County



**Trenton Uptmore**  
District 4  
Hill County



**Natalie Oud**  
District 5  
Franklin County



**Carlie Hollingsworth**  
District 6  
Howard County



**Justin Been**  
District 7  
Comanche County



**Tanner Stefka**  
District 8  
Burleson County

# YF&R Scholarship Winners



Victoria Martin  
District 9  
Houston County



Johnna Pieniasek  
District 10  
Bexar County



Jacob Supak  
District 11  
Wharton County



Jeffrey Nemece  
District 12  
DeWitt County



Bailey Scogin  
District 13  
Willacy County

## YF&R for Enrolled College Student Scholarship Winners



Rylee Rushing  
District 4  
Collin County



Josh Haddox  
District 9  
Nacogdoches County



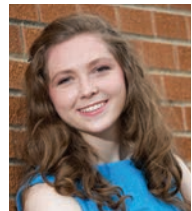
Cody Garrett  
District 12  
DeWitt County

## Dick Mitchell Memorial Scholarship Winner



Kenneth Miller  
District 13  
Cameron County

## S.M. True Jr. Agricultural Scholar Award



McCalley Cunningham  
District 8  
Travis County



# District Memorial/Honorary Scholarship Winners

Don Sugarek  
Memorial Scholarship



Hailey Wright  
District 1  
Collingsworth

S.M. True Jr.  
Memorial Scholarship



Hannah Cockerell  
District 2  
Lubbock County

Adam Berend  
Memorial Scholarship



Laura Howell  
District 3  
Baylor County

Joe Kapavik  
Memorial Scholarship



Ty Tidwell  
District 4  
Navarro County

John W. "Pete" Gipson  
Memorial Scholarship



Colby Gipson  
District 5  
Upshur County

David Stubblefield  
Honorary Scholarship



Emily Niehues  
District 6  
Tom Green County

Ab Hunter  
Memorial Scholarship



Conner McKinzie  
District 7  
Erath County

Barney and Christine Groves  
Honorary Scholarship



Tanner Stefka  
District 8  
Burlleson County

Harold Hughes  
Memorial Scholarship



Aaron Milligan  
District 9  
Angelina County

# District Memorial/Honorary Scholarship Winners

Dennis Dean  
Honorary Scholarship



Valarie Verstuyft  
District 10  
Uvalde County

Ira Lapham  
Honorary Scholarship



Colton Leopold  
District 11  
Colorado County

Don Sugarek  
Memorial Scholarship



Austin Akin  
District 12  
Wilson County

Lindsey Koenig  
Honorary Scholarship



Bailey Scogin  
District 13  
Willacy County

Applications for these scholarships are available via Texas Farm Bureau's website, [www.texasfarmbureau.org](http://www.texasfarmbureau.org).

The deadline for applications is March 1, 2017.

# 2016 Pioneer Award Winners



**District 1**  
Don Ray Crook  
Childress County



**District 5**  
Donald Herbert  
Metch  
Van Zandt County



**District 2**  
Elmo Orange  
Snelling  
Hale County



**District 6**  
John E. Stephens  
Coke-Sterling  
County



**District 3**  
Arnold Koester  
Young County  
(*posthumously*)



**District 7**  
Earl Wesley  
Behrens  
McCulloch County



**District 4**  
Don Smelley  
Parker County



**District 8**  
Daniel Bernard  
(Dan) Dierschke  
Travis County

# 2016 Pioneer Award Winners



**District 9**  
Maxie Eaves  
Shelby County



**District 13**  
Dwayne W. Bair  
Hidalgo County



**District 10**  
Alice Ruby  
Wiemers  
Medina County  
(*posthumously*)



**Staff**  
Vernie R. Glasson III



**District 11**  
Curt Mowery III  
Brazoria-Galveston  
County



**District 12**  
Ray Joy Pfannstiel  
Guadalupe County

# 2016 Top Ten Counties

## Total Members

Collin County .....	13,487
Brazoria-Galveston County .....	12,393
Fort Bend County .....	10,921
Jefferson County .....	10,017
Harris County .....	8,841
Ellis County .....	8,739
McLennan County .....	8,004
Bell County .....	7,187
Bexar County .....	7,018
Nueces County .....	6,771

## New Members

Collin County .....	1,828
Brazoria-Galveston County .....	1,823
Fort Bend County .....	1,459
Harris County .....	1,380
McLennan County .....	1,249
Jefferson County .....	1,211
Ellis County .....	1,174
Grayson County .....	1,011
Bexar County .....	944
Bell County .....	939

## Total Gain

Grayson County .....	343
Gregg County .....	295
Brazoria-Galveston County .....	279
Wilson County .....	253
Johnson County .....	216
Bexar County .....	188
Robertson County .....	179
Smith County .....	165
Kendall County .....	163
McLennan County .....	158

# 2016 Top Ten Counties

## Renewal Percentage

Throckmorton County .....	96.30 %
Yoakum County .....	94.86 %
Dickens County .....	94.00 %
Coleman County .....	93.71 %
San Saba County.....	93.65 %
Motley County .....	93.55 %
Collingsworth County .....	93.43 %
Gonzales County .....	93.26 %
Kimble County.....	93.15 %
Mills County.....	92.98 %

## Continuous Gain

DeWitt County .....	67 Years
Franklin County .....	36 Years
Erath County.....	30 Years
Live Oak County .....	30 Years
Henderson County .....	27 Years
Atascosa County .....	25 Years
Bell County .....	25 Years
Comal County.....	25 Years
Gillespie County .....	25 Years
Hill County .....	25 Years
Medina County .....	25 Years
Navarro County .....	25 Years
Tyler County.....	25 Years

# 2016 Resolutions Committee

Michael White, District 3 ..... Chairman  
Ronnie Muennink, District 10 ..... Vice Chairman  
Dan B. Smith, District 2 ..... Secretary  
Bud Hardin, Johnson County ..... YF&R Chair

## DISTRICT 1

Shane Harris ..... Childress County  
Trent Cadra ..... Wheeler County  
Landon Friemel ..... Deaf Smith County

## DISTRICT 2

Tanner Smith ..... Floyd County  
Jim Blankenship ..... Lynn-Garza County

## DISTRICT 3

Glenn Thorman ..... Archer County  
Keith Colteryahn ..... Cooke County  
Steven Sparkman ..... Hardeman County

## DISTRICT 4

Ben Wible ..... Grayson County  
Scott Renfro ..... Grayson County  
Lee Calvert ..... Ellis County

## DISTRICT 5

Justin Mitchell ..... Smith County  
Eric Lum ..... Bowie County  
Dennis Smith ..... Camp County

## DISTRICT 6

Val Stephens ..... Dawson County  
Warren Cude ..... Pecos-Reeves County  
Terry Caffey ..... Concho County

# 2016 Resolutions Committee

## DISTRICT 7

- Robert Atwood ..... Taylor County
- Lewis Lehman ..... Brown County

## DISTRICT 8

- Neil Walter ..... Coryell County
- Larry Hoelscher ..... Falls County
- Kenton Lillie ..... Burleson County

## DISTRICT 9

- Chuck Conner ..... Angelina County
- Donald Sloan ..... Anderson County
- Bennie Whitworth ..... Rusk County

## DISTRICT 10

- D.J. Gemblar ..... Uvalde County
- Peggy Matli ..... Gillespie County

## DISTRICT 11

- Wallace Brown ..... Fayette County
- Larry Bumpurs ..... Montgomery County
- Ricky Schroeder ..... Grimes County

## DISTRICT 12

- Zachary Yanta ..... Karnes County
- Mike Brzozowski ..... Gonzales County
- Dan Nunley ..... Calhoun County

## DISTRICT 13

- Benton England ..... Hidalgo County
- Chris Sparks ..... Cameron County
- Lloyd Stewart Jr. ..... Live Oak County



# TFB Member Benefits & Services

## **Polaris \***

ADT Home Monitoring System

## **Caterpillar \***

## **Sprint \***

VerifID

## **GM Bonus Cash Offer \***

## **CASE IH Discount \***

## **Careington Discount Dental \***

Discount Car Rental

Alamo, Avis, Budget, Enterprise, Hertz and National

Amusement Park Discount Tickets

**Schlitterbahn-New Braunfels\***, Six Flags Arlington,  
Six Flags Fiesta Texas, Sea World, Wet 'n' Wild SplashTown

## **Grainger Industrial Supply Discount Program \***

Beltone Hearing Aid Program

Infant Car Seat Program

Coast to Coast Vision

KD Loaders

## **Farm Bureau Bank \***

Texas Farm Bureau Insurance Companies

NBRX Discount Prescription Drugs

## **Texas Salebarn \***

Group Accidental Death Program

Hotel/Motel Discounts

Choice Hotels International, Wyndham Group, **LaQuinta\*** and Drury Inn

Horseshoe Bay Resort

Sherwin-Williams Discount Program

Property Protection Program

Defensive Driving Course

## **TFB Fleet Sales \***

## **Ferrellgas Propane \***

Gate Sign Program

## **Gilsbar \***

Agelity Discount Prescription Drugs

## **Dell\***

## **Blue Cross Blue Shield \***

SmartSign

## **Education Outreach \***

## **TFB Store \***

## **AGFUND \***

## **Member Services \***

Texas Football

**\* See us in the member services exhibit area.**

Notes:

Notes:

Join the convention  
discussion on Twitter.



Use the hashtag **#txfbmeets**  
and follow **@TexasFarmBureau**.

**WWW. TEXASFARMBUREAU.ORG**