



National July Cattle Inventory

Southern Plains Regional Field Office · Post Office Box 70, Austin, Texas 78767 · 800-626-3142 · www.nass.usda.gov

Cooperating with the Oklahoma Department of Agriculture, Food and Forestry and Texas Department of Agriculture

July 21, 2017

Contact: [Carol Pittman](#) or [Jason Hardegree](#)

This report contains the results from the July 2017 Cattle survey, which was based on a national survey of nearly 50,000 producers. Our thanks go out to all of those who participated in this survey and provided the data to measure the mid-year national cattle inventory and the expected 2017 calf crop.

Cattle Inventory by Class, United States: July 1, 2015 and 2017
(July 2016 *Cattle* report suspended due to budgetary constraints)

Class	2015	2017	Percent of 2015
	<i>1,000 head</i>	<i>1,000 head</i>	<i>percent</i>
All Cattle and Calves	98,200	102,600	104
Cows & Heifers that have calved.....	39,800	41,900	105
Beef Cows	30,500	32,500	107
Milk Cows	9,300	9,400	101
Heifers 500 pounds and over.....	15,700	16,200	
Beef Replacement	4,800	4,700	98
Milk Replacement	4,200	4,200	100
Other Heifers	6,700	7,300	109
Steers 500 pounds and over.....	14,100	14,500	103
Bulls 500 pounds and over	1,900	2,000	105
Calves under 500 pounds.....	26,700	28,000	105
Cattle on Feed	12,100	12,800	106

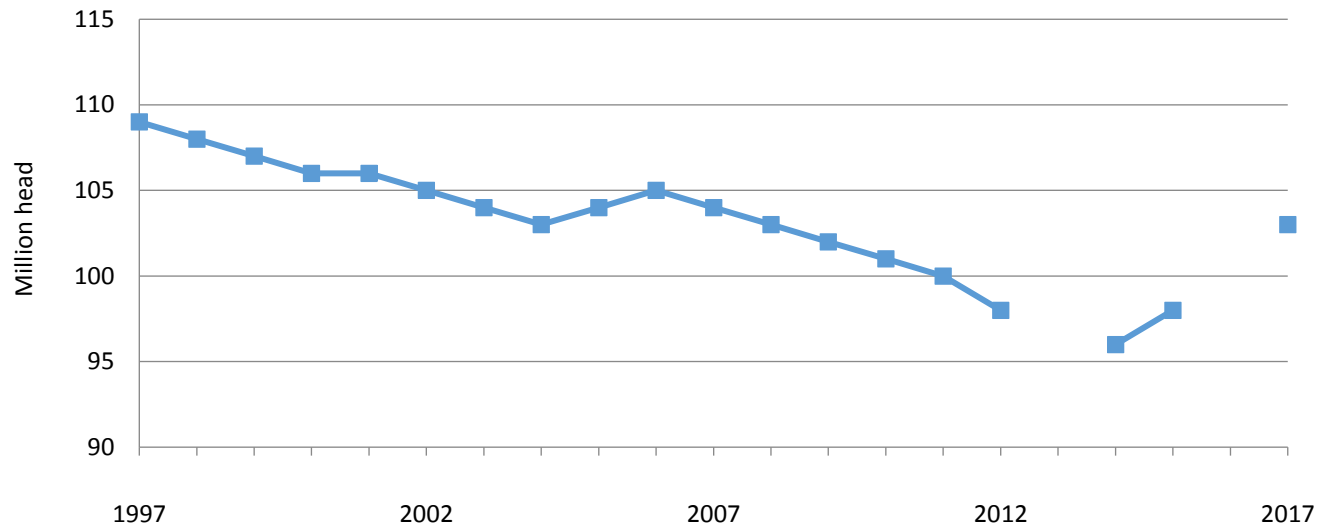
All cattle and calves in the United States on July 1, 2017, totaled 102.6 million head, 4 percent above the 98.2 million on July 1, 2015. All cattle and calves on feed for slaughter totaled 12.8 million, up 6 percent from 2015.

All cows and heifers that have calved, at 41.9 million, were up 5 percent from July 1, 2015. The 2017 calf crop is expected to be 36.3 million, up 3 percent from 2016 and up 6 percent from 2015.

Calf Crop and Percent of Total by Six-Month Period
United States: 2015, 2016, and Preliminary 2017

Period	2015		2016		2017	
	Number	Percent of total	Number	Percent of total	Number	Percent of total
	<i>1,000 head</i>	<i>percent</i>	<i>1,000 head</i>	<i>percent</i>	<i>1,000 head</i>	<i>percent</i>
January 1 - June 30.....	24,650	72.3	25,550	72.8	26,500	73.0
July 1 - December 31.....	9,437	27.7	9,533	27.2	9,800	27.0
Total.....	34,087	100.0	35,083	100.0	36,300	100.0

United States Cattle Inventory July 1, 1997 - 2017 ¹



¹ Due to budgetary constraints in 2013 and 2016, program reductions resulted in temporary interruptions of the data series for July Cattle Inventory.